

Recombinant BVDV Glycoprotein E2 Protein, C-His

Summary

Catalog No.	EVV14701
Alternative Names	Genome polyprotein, N-terminal protease, N-pro, 3.4.22.-, Autoprotease p20, Capsid protein C, E(rns) glycoprotein, gp44/48, Envelope glycoprotein E1, gp33, Envelope glycoprotein E2, gp55, Viroporin p7, Non-structural protein 2-3, Cysteine protease NS2, 3.4.22.-, Non-structural protein 2, Serine protease NS3, 3.4.21.113, 3.6.1.15, 3.6.4.13, Non-structural protein 3, Non-structural protein 4A, NS4A, Non-structural protein 4B, NS4B, Non-structural protein 5A, NS5A, RNA-directed RNA polymerase, 2.7.7.48, NS5B
Form	Lyophilized
Storage buffer	Lyophilized from a solution in PBS pH 7.4, 1mM EDTA, 4% Trehalose, 1% Mannitol.
Purity	>90% as determined by SDS-PAGE.
Applications	ELISA, Immunogen, SDS-PAGE, WB, Bioactivity testing in progress
Endotoxin level	Please contact with the lab for this information.
Expression system	Mammalian Cells
Accession	P19711
Protein length	His693-Asp1030
Nature	Recombinant
Predicted molecular weight	41.38 kDa

Recombinant Proteins & Antibodies**Stability and Storage**

Use a manual defrost freezer and avoid repeated freeze thaw cycles. Store at 2 to 8°C for frequent use. Store at -20 to -80°C for twelve months from the date of receipt.

Reconstitution

Reconstitute in sterile water for a stock solution. A copy of datasheet will be provided with the products, please refer to it for details.

Species

Bovine viral diarrhea virus (isolate NADL) (BVDV) (Mucosal disease virus)

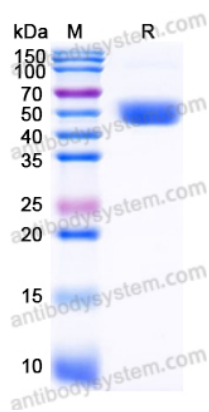
Shipping

In general, proteins are provided as lyophilized powder/frozen liquid. They are shipped out with dry ice/blue ice unless customers require otherwise.

Note

For research use only.

Data Image



SDS-PAGE

SDS PAGE for Recombinant Bovine viral diarrhea virus/BVDV Envelope glycoprotein E2 Protein