

Anti-Dermatophagoides farinae DERF1/DERP1 Antibody (4C1)

Summary

Catalog No.	RXX51601
Clone ID	4C1
Host species	Human
Species reactivity	Dermatophagoides farinae (American house dust mite), Dermatophagoides pteronyssinus (European house dust mite)
Form	Liquid
Storage buffer	0.01M PBS, pH 7.4.
Concentration	2.5 mg/ml
Purity	>95% as determined by SDS-PAGE.
Clonality	Monoclonal
Isotype	IgG1, kappa
Applications	ELISA
Target	Peptidase 1, 3.4.22.65, Allergen Der f I, Major mite fecal allergen Der f 1, Der f 1, DERF1, Allergen Der p I, Major mite fecal allergen Der p 1, Der p 1, DERP1, Dermatophagoides farinae
Purification	Protein A/G purified from cell culture supernatant.
Endotoxin level	Please contact with the lab for this information.
Accession	P16311 & P08176

Stability and Storage

Use a manual defrost freezer and avoid repeated freeze-thaw cycles.

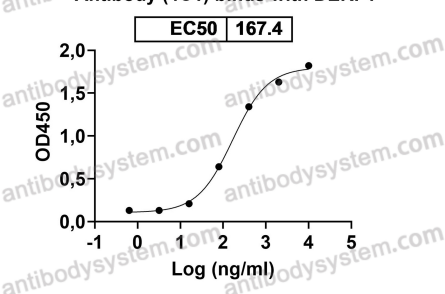
Store at 4°C short term (1-2 weeks). Store at -20°C 12 months. Store at -80°C long term.

Note

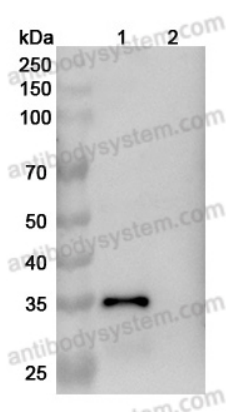
For research use only.

Data Image

Anti-Dermatophagoides farinae DERF1/DERP1
Antibody (4C1) binds with DERF1



Bioactivity



Western blot

Detects Dermatophagoides farinae (American house dust mite), Dermatophagoides pteronyssinus (European house dust mite) DERF1/DERP1 in indirect ELISAs.

Various lysates were subjected to SDS PAGE followed by western blot with American house dust mite DERF1 antibody (RXX51601) at 1µg/ml.

Lane 1: American house dust mite DERF1

transfected HEK293 cell lysate

Lane 2: Non-transfected HEK293 cell lysate

Second Ab: Goat Anti-Human IgG H&L Polyclonal antibody, HRP (PHB96431) at 0.1 µg/mL.

Predict MW: 35 kDa

Observed MW: 35 kDa