

Recombinant Human CD158e/KIR3DL1 Protein, C-Fc

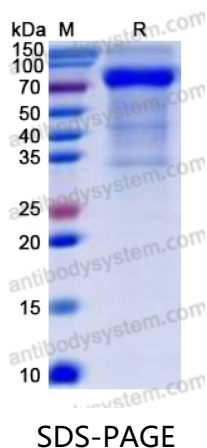
Summary

Catalog No.	EHE43701
Alternative Names	HLA-BW4-specific inhibitory NK cell receptor, NKB1, KIR3DL1, p70 NK receptor CL-2/CL-11, CD158E, MHC class I NK cell receptor, Killer cell immunoglobulin-like receptor 3DL1, p70 natural killer cell receptor clones CL-2/CL-11, Natural killer-associated transcript 3, NKAT-3, CD158e, CD158 antigen-like family member E, NKAT3
Form	Lyophilized
Storage buffer	Lyophilized from a solution in PBS pH 7.4, 1mM EDTA, 4% Trehalose, 1% Mannitol.
Purity	>90% as determined by SDS-PAGE.
Applications	ELISA, Immunogen, SDS-PAGE, WB, Bioactivity testing in progress
Endotoxin level	Please contact with the lab for this information.
Expression system	Mammalian Cells
Accession	P43629
Protein length	His22-His340
Nature	Recombinant
Predicted molecular weight	63.53 kDa
Stability and Storage	Use a manual defrost freezer and avoid repeated freeze thaw cycles. Store at 2 to 8°C for frequent use. Store at -20 to -80°C for twelve months from the date of receipt.
Reconstitution	Reconstitute in sterile water for a stock solution. A copy of datasheet will be provided with the products, please refer to it for details.

Recombinant Proteins & Antibodies

Species	Homo sapiens (Human)
Shipping	In general, proteins are provided as lyophilized powder/frozen liquid. They are shipped out with dry ice/blue ice unless customers require otherwise.
Note	For research use only.

Data Image



SDS PAGE for recombinant Human
CD158e/KIR3DL1 Protein