

Recombinant Human CD10/MME Protein, C-His

Summary

Catalog No.	EHC33001
Alternative Names	Atriopeptidase, Common acute lymphocytic leukemia antigen, Neutral endopeptidase, Skin fibroblast elastase, CD10, SFE, CALLA, Neprilysin, Neutral endopeptidase 24.11, MME, NEP, Enkephalinase, EPN
Form	Lyophilized
Storage buffer	Lyophilized from a solution in PBS pH 7.4, 1mM EDTA, 4% Trehalose, 1% Mannitol.
Purity	>90% as determined by SDS-PAGE.
Applications	ELISA, Immunogen, SDS-PAGE, WB, Bioactivity testing in progress
Endotoxin level	Please contact with the lab for this information.
Expression system	Mammalian Cells
Accession	P08473
Protein length	Tyr52-Trp750
Nature	Recombinant
Predicted molecular weight	82.48 kDa
Stability and Storage	Use a manual defrost freezer and avoid repeated freeze thaw cycles. Store at 2 to 8°C for frequent use. Store at -20 to -80°C for twelve months from the date of receipt.
Reconstitution	Reconstitute in sterile water for a stock solution. A copy of datasheet will be provided with the products, please refer to it for details.
Species	Homo sapiens (Human)

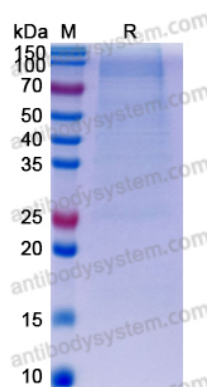
Shipping

In general, proteins are provided as lyophilized powder/frozen liquid. They are shipped out with dry ice/blue ice unless customers require otherwise.

Note

For research use only.

Data Image

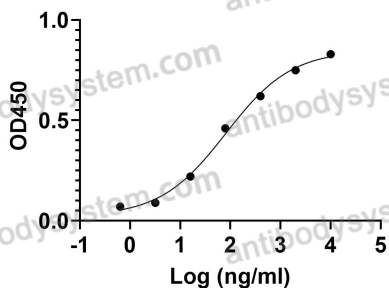


SDS-PAGE

SDS PAGE for recombinant Human CD10/MME Protein

Anti-Human CD10/MME Antibody (NL-1)
binds with Human CD10

EC50 81.90



Bioactivity

Detects Human CD10/MME Antibody (NL-1) in indirect ELISAs.