

# Anti-Monkeypox virus/MPXV A35R Polyclonal Antibody

## Summary

---

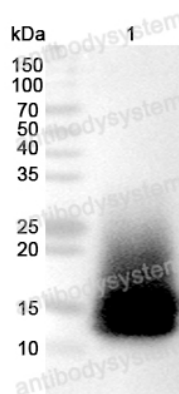
<b>Catalog No.</b>	PVV13101
<b>Host species</b>	Rabbit
<b>Tested applications</b>	ELISA: 1:4000-1:8000, IHC:1:50-1:200, WB: 1:1000-1:4000
<b>Species reactivity</b>	Monkeypox virus (MPXV)
<b>Immunogen</b>	E. coli - derived recombinant Monkeypox virus/MPXV A35R (Val57-Thr181).
<b>Form</b>	Liquid
<b>Storage buffer</b>	0.01M PBS, pH 7.4, 50% Glycerol, 0.05% Proclin 300.
<b>Concentration</b>	1.13 mg/ml
<b>Clonality</b>	Polyclonal
<b>Isotype</b>	IgG
<b>Applications</b>	ELISA, IHC, WB
<b>Target</b>	A35R, Bifunctional EEV membrane phosphoglycoprotein, Bifunctional EEV membrane phosphoglycoprotein/associates with A36R, Bifunctional EEV membrane protein, EEV membrane phosphoglycoprotein, EEV membrane phosphoglycoprotein C-type,EEV membrane phosphoglycoprotein, C-type lectin-like domain, MPXV-COP-139, MPXV-SL-139, MPXV-WRAIR139
<b>Purification</b>	Purified by antigen affinity column.

**Stability and Storage**

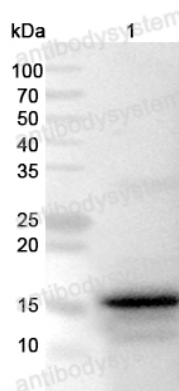
Use a manual defrost freezer and avoid repeated freeze thaw cycles. Store at 2 to 8°C for frequent use. Store at -20 to -80°C for twelve months from the date of receipt.

**Note**

For research use only.

**Data Image**

Western Blot



Western Blot

Recombinant Protein were subjected to SDS PAGE followed by western blot with Monkeypox virus/MPXV A35R antibody (PVV13101) at 1ug/ml.

Lane 1: Recombinant Monkeypox virus/MPXV A35R Protein([EVV13101](#))

Second Ab: Goat Anti-Rabbit IgG H&L Polyclonal antibody, HRP ([PTB96431](#)) at 0.1 µg/mL.

Predict MW: 16 kDa

Observed MW: 16 kDa

Recombinant Protein were subjected to SDS PAGE followed by western blot with Monkeypox virus/MPXV A35R antibody (PVV13101) at 1ug/ml.

Lane 1: Recombinant Monkeypox virus/MPXV A35R Protein([YVV13101](#))

Second Ab: Goat Anti-Rabbit IgG H&L Polyclonal antibody, HRP ([PTB96431](#)) at 0.1 µg/mL.

Predict MW: 16 kDa

Observed MW: 16 kDa