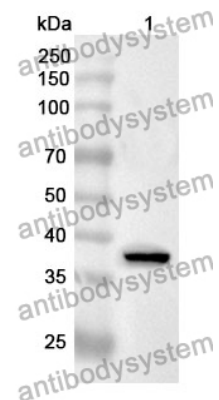


Anti-ADAP1 Polyclonal Antibody

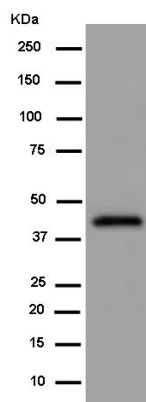
Summary

Catalog No.	PHB28701
Host species	Rabbit
Tested applications	ELISA: 1:4000-1:8000, IHC: 1:50-1:100, WB: 1:1000-1:4000
Species reactivity	Human, Rat
Immunogen	E. coli - derived recombinant Human ADAP1 (Ser45-Asp356).
Form	Liquid
Storage buffer	0.01M PBS, pH 7.4, 50% Glycerol, 0.05% Proclin 300.
Clonality	Polyclonal
Isotype	IgG
Applications	ELISA, IHC, WB
Target	CENTA1,Centaurin-alpha-1,ADAP1,Arf-GAP with dual PH domain-containing protein 1,Cnt-a1,Putative MAPK-activating protein PM25
Purification	Purified by antigen affinity column.
Accession	O75689
Stability and Storage	Use a manual defrost freezer and avoid repeated freeze thaw cycles. Store at 2 to 8°C for frequent use. Store at -20 to -80°C for twelve months from the date of receipt.
Note	For research use only.

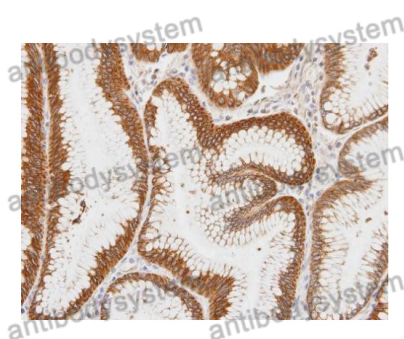
Data Image



WESTERN BLOT



Western Blot



Immunohistochemical

Recombinant Protein lysates were subjected to SDS PAGE followed by western blot with ADAP1 antibody (PHB28701) at 1 μ g/ml.

Lane 1: Recombinant protein

Second Ab: Goat Anti-Rabbit IgG H&L Polyclonal antibody, HRP (PTB96431) at 0.1 μ g/mL.

Predict MW: 39 kDa

Observed MW: 39 kDa

Various lysates were subjected to SDS PAGE followed by western blot with ADAP1 antibody (PHB28701) at 1 μ g/ml.

Lane 1: A431

Second Ab: Goat Anti-Rabbit IgG H&L Polyclonal antibody, HRP (PTB96431) at 0.1 μ g/mL.

Predict MW: 43 kDa

Observed MW: 43 kDa

Immunohistochemical analysis of human gastric tissue stained for ADAP1 with PHB28701.