

# Anti-NME6 Polyclonal Antibody

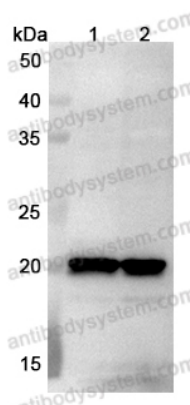
## Summary

---

<b>Catalog No.</b>	PHB19301
<b>Host species</b>	Rabbit
<b>Tested applications</b>	ELISA: 1:4000-1:8000, IHC: 1:50-1:100, WB: 1:1000-1:4000
<b>Species reactivity</b>	Human, Mouse, Rat
<b>Immunogen</b>	E. coli - derived recombinant Human NME6 (Leu11-Ala186).
<b>Form</b>	Liquid
<b>Storage buffer</b>	0.01M PBS, pH 7.4, 50% Glycerol, 0.05% Proclin 300.
<b>Clonality</b>	Polyclonal
<b>Isotype</b>	IgG
<b>Applications</b>	ELISA, IHC, WB
<b>Target</b>	nm23-H6,Nucleoside diphosphate kinase 6,IPIA-alpha,NME6,NDP kinase 6,Inhibitor of p53-induced apoptosis-alpha,NDK 6
<b>Purification</b>	Purified by antigen affinity column.
<b>Accession</b>	O75414
<b>Stability and Storage</b>	Use a manual defrost freezer and avoid repeated freeze thaw cycles. Store at 2 to 8°C for frequent use. Store at -20 to -80°C for twelve months from the date of receipt.
<b>Note</b>	For research use only.

## Data Image

---



Western Blot

Various lysates were subjected to SDS PAGE followed by western blot with NME6 antibody (PHB19301) at 1 µg/ml.

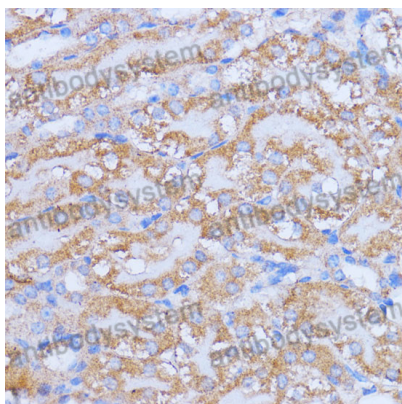
Lane 1: Lncap cell lysate

Lane 2: U2OS cell lysate

Second Ab: Goat Anti-Rabbit IgG H&L Polyclonal antibody, HRP (PTB96431) at 0.1 µg/mL.

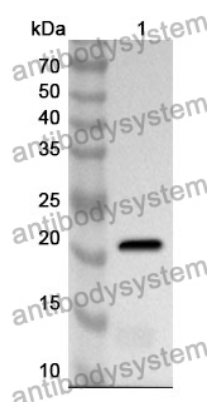
Predict MW: 21 kDa

Observed MW: 21 kDa



Immunohistochemical

Immunohistochemical analysis of mouse kidney stained for NME6 with PHB19301.



Western Blot

Recombinant Protein lysates were subjected to SDS PAGE followed by western blot with NME6 antibody (PHB19301) at 1 µg/ml.

Lane 1: Recombinant Protein

Second Ab: Goat Anti-Rabbit IgG H&L Polyclonal antibody, HRP (PTB96431) at 0.1 µg/mL.

Predict MW: 22 kDa

Observed MW: 22 kDa