

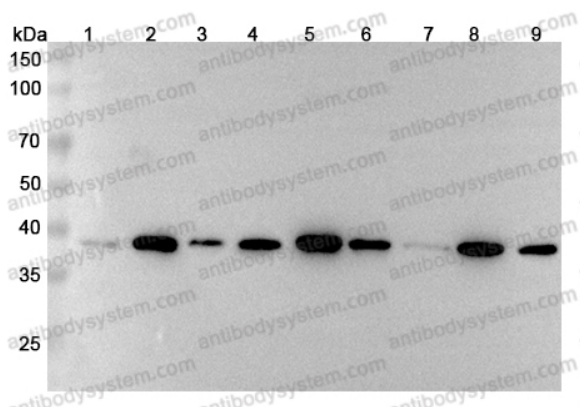
Anti-MACROH2A1 Polyclonal Antibody

Summary

| | |
|------------------------------|---|
| Catalog No. | PHB17201 |
| Host species | Rabbit |
| Tested applications | ELISA: 1:4000-1:8000, IHC: 1:50-1:100, WB: 1:1000-1:4000 |
| Species reactivity | Human, Mouse, Rat |
| Immunogen | E. coli - derived recombinant Human MACROH2A1 (Ile109-Leu369). |
| Form | Liquid |
| Storage buffer | 0.01M PBS, pH 7.4, 50% Glycerol, 0.05% Proclin 300. |
| Clonality | Polyclonal |
| Isotype | IgG |
| Applications | ELISA, IHC, WB |
| Target | Histone macroH2A1,mH2A1,H2A/y,MACROH2A1,Medulloblastoma antigen MU-MB-50.205,Core histone macro-H2A.1,H2AFY,Histone H2A.y |
| Purification | Purified by antigen affinity column. |
| Accession | O75367 |
| Stability and Storage | Use a manual defrost freezer and avoid repeated freeze thaw cycles. Store at 2 to 8°C for frequent use. Store at -20 to -80°C for twelve months from the date of receipt. |
| Note | For research use only. |

Data Image

Various lysates were subjected to SDS PAGE followed by western blot with MACROH1A2 antibody (PHB17201) at 1µg/ml.



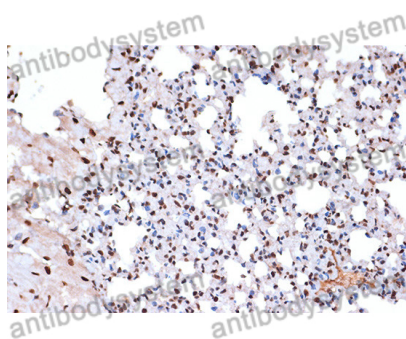
Western Blot

Lane 1: MCF7 cell lysate
Lane 2: Hela cell lysate
Lane 3: Rat brain lysate
Lane 4: Rat liver lysate
Lane 5: 293T cell lysate
Lane 6: HepG2 cell lysate
Lane 7: Mouse brain lysate
Lane 8: Mouse liver lysate
Lane 9: Rat lung lysate

Second Ab: Goat Anti-Rabbit IgG H&L Polyclonal antibody, HRP (PTB96431) at 0.1 µg/mL.

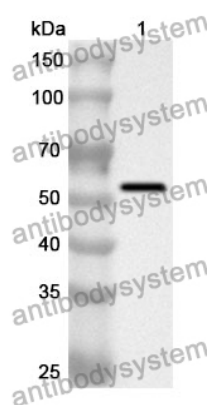
Predict MW: 39 kDa

Observed MW: 39 kDa



Immunohistochemical

Immunohistochemical analysis of mouse lung stained for MACROH2A1 with PHB17201.



Western Blot

Recombinant Protein lysates were subjected to SDS PAGE followed by western blot with MACROH2A1 antibody (PHB17201) at 1 μ g/ml.

Lane 1: Recombinant Protein

Second Ab: Goat Anti-Rabbit IgG H&L Polyclonal antibody, HRP (PTB96431) at 0.1 μ g/mL.

Predict MW: 55 kDa

Observed MW: 55 kDa