

# Anti-Phospho-CASC5 (pT943) Antibody (pMELT-KNL1)

## Summary

---

<b>Catalog No.</b>	RHK27001
<b>Clone ID</b>	pMELT-KNL1
<b>Host species</b>	Mouse
<b>Species reactivity</b>	Human
<b>Form</b>	Liquid
<b>Storage buffer</b>	0.01M PBS, pH 7.4.
<b>Concentration</b>	1.33 mg/ml
<b>Purity</b>	>95% as determined by SDS-PAGE.
<b>Clonality</b>	Monoclonal
<b>Isotype</b>	IgG2a, kappa
<b>Applications</b>	IHC, IP, WB
<b>Target</b>	Blinkin, CT29, Kinetochore-null protein 1, Cancer/testis antigen 29, Bub-linking kinetochore protein, Protein CASC5, Protein D40/AF15q14, ALL1-fused gene from chromosome 15q14 protein, Kinetochore scaffold 1, CASC5, KNL1, Cancer susceptibility candidate gene 5 protein, KIAA1570, AF15q14
<b>Purification</b>	Protein A/G purified from cell culture supernatant.
<b>Endotoxin level</b>	Please contact with the lab for this information.
<b>Accession</b>	Q8NG31

## Recombinant Proteins &amp; Antibodies

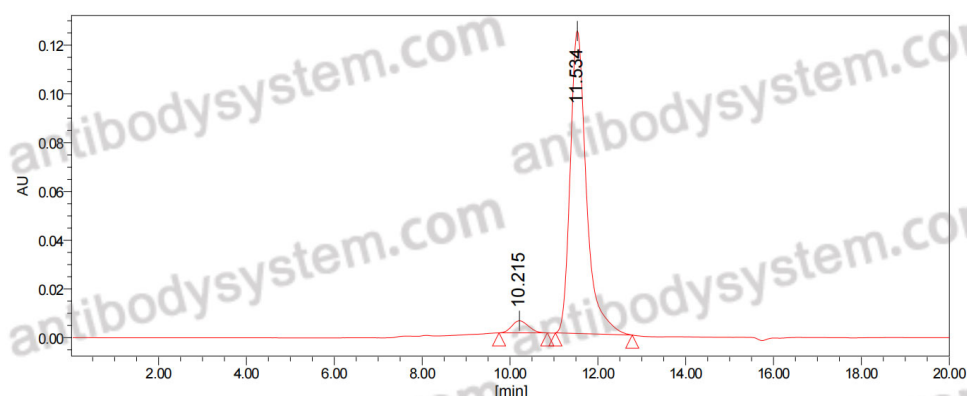
**Stability and Storage**

Use a manual defrost freezer and avoid repeated freeze-thaw cycles.

Store at 4°C short term (1-2 weeks). Store at -20°C 12 months. Store at -80°C long term.

**Note**

For research use only.

**Data Image**

SEC-HPLC

The purity of this product is >95% as determined by SEC-HPLC.