

# Recombinant Human CD200R1/OX2R Protein, C-His

## Summary

---

|                                   |  |
|-----------------------------------|--|
| <b>Catalog No.</b>                | EHJ27901   |
| <b>Alternative Names</b>          | Cell surface glycoprotein CD200 receptor 1, CD200 cell surface glycoprotein receptor, Cell surface glycoprotein OX2 receptor 1, CD200R1, CD200R, CRTR2, MOX2R, OX2R, UNQ2522/PRO6015 |
| <b>Form</b>                       | Lyophilized  |
| <b>Storage buffer</b>             | Lyophilized from a solution in PBS pH 7.4, 1mM EDTA, 4% Trehalose, 1% Mannitol.  |
| <b>Purity</b>                     | >90% as determined by SDS-PAGE.  |
| <b>Applications</b>               | ELISA, Immunogen, SDS-PAGE, WB, Bioactivity testing in progress  |
| <b>Endotoxin level</b>            | Please contact with the lab for this information.  |
| <b>Expression system</b>          | Mammalian Cells  |
| <b>Accession</b>                  | Q8TD46   |
| <b>Protein length</b>             | Met1-Leu266  |
| <b>Nature</b>                     | Recombinant  |
| <b>Predicted molecular weight</b> | 30.59 kDa  |
| <b>Stability and Storage</b>      | Use a manual defrost freezer and avoid repeated freeze thaw cycles. Store at 2 to 8°C for frequent use. Store at -20 to -80°C for twelve months from the date of receipt.            |
| <b>Reconstitution</b>             | Reconstitute in sterile water for a stock solution. A copy of datasheet will be provided with the products, please refer to it for details.  |
| <b>Species</b>                    | Homo sapiens (Human)   |

## Shipping

In general, proteins are provided as lyophilized powder/frozen liquid. They are shipped out with dry ice/blue ice unless customers require otherwise.

## Note

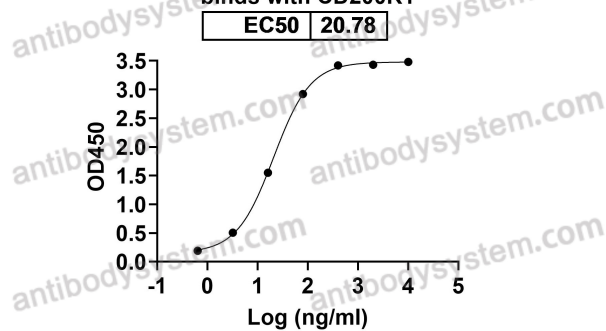
For research use only.

## Data Image



SDS PAGE for recombinant Human CD200R1/OX2R Protein

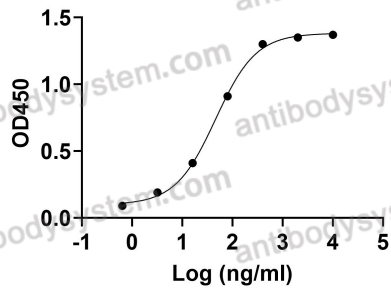
Anti-Human CD200R1/OX2R Antibody (23ME-00610) binds with CD200R1



Detected 23ME-00610 in indirect ELISAs.

Anti-Human CD200R1/OX2R Antibody (OX-108)  
binds with Human CD200R1

|      |       |
|------|-------|
| EC50 | 46.18 |
|------|-------|



Bioactivity

Detects Human CD200R1/OX2R Antibody in indirect ELISAs.