

# Anti-Strep Tag (WSHPQFEK) Antibody (C23.21)

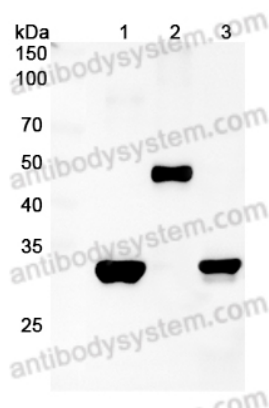
## Summary

---

<b>Catalog No.</b>	RGK26101
<b>Clone ID</b>	C23.21
<b>Host species</b>	Mouse
<b>Tested applications</b>	ELISA: 1:2000-1:8000, WB: 1:500-1:5000
<b>Form</b>	Liquid
<b>Storage buffer</b>	0.01M PBS, pH 7.4.
<b>Concentration</b>	0.56 mg/ml
<b>Purity</b>	>95% as determined by SDS-PAGE.
<b>Clonality</b>	Monoclonal
<b>Isotype</b>	IgG1, kappa
<b>Applications</b>	ELISA, WB
<b>Target</b>	Strep Tag (WSHPQFEK), Strep-Tag, Strep-Tag II peptide (WSHPQFEK), streptag, StrepTag II
<b>Purification</b>	Protein A/G purified from cell culture supernatant.
<b>Endotoxin level</b>	Please contact with the lab for this information.
<b>Stability and Storage</b>	Use a manual defrost freezer and avoid repeated freeze-thaw cycles. Store at 4°C short term (1-2 weeks). Store at -20°C 12 months. Store at -80°C long term.
<b>Note</b>	For research use only.

## Data Image

---



Western Blot

Various Recombinant Protein lysates were subjected to SDS PAGE followed by western blot with Strep Tag antibody (RGK26101) at 1 $\mu$ g/ml.

Lane 1: Recombinant Protein 1-Strep Tag

Lane 2: Recombinant Protein 2-Strep Tag

Lane 3: Recombinant Protein 3-Strep Tag

Second Ab: Goat Anti-Mouse IgG H&L Polyclonal antibody, HRP (PMB96431) at 0.1  $\mu$ g/mL.