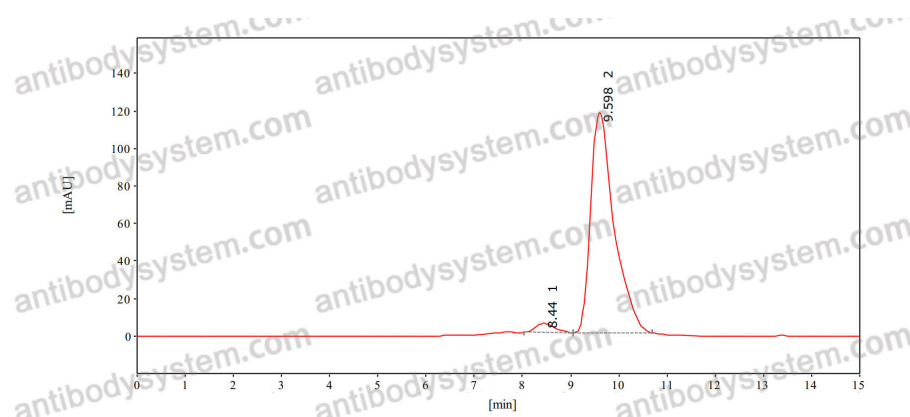


Anti- α -Gal Epitope (Gal α 1-3Gal β 1-4GlcNAc-R) Antibody (B4H2)

Summary

Catalog No.	RGK25404
Clone ID	B4H2
Host species	Mouse
Species reactivity	Mouse, Rat, Porcine
Form	Liquid
Storage buffer	0.01M PBS, pH 7.4.
Concentration	1.47 mg/ml
Purity	>95% as determined by SDS-PAGE.
Clonality	Monoclonal
Isotype	IgG1
Applications	ELISA, FCM, FuncS, IHC-P, WB
Target	α -Galactose 1,3, α -Gal Epitope (Gal α 1-3Gal β 1-4GlcNAc-R)
Purification	Protein A/G purified from cell culture supernatant.
Endotoxin level	Please contact with the lab for this information.
Stability and Storage	Use a manual defrost freezer and avoid repeated freeze-thaw cycles. Store at 4°C short term (1-2 weeks). Store at -20°C 12 months. Store at -80°C long term.
Note	Do not use non-fat milk for blocking! Many blocking agents from non-human mammal sources will cross-react with the antibody.

Data Image



SEC-HPLC

The purity of this product is >95% as determined by SEC-HPLC.