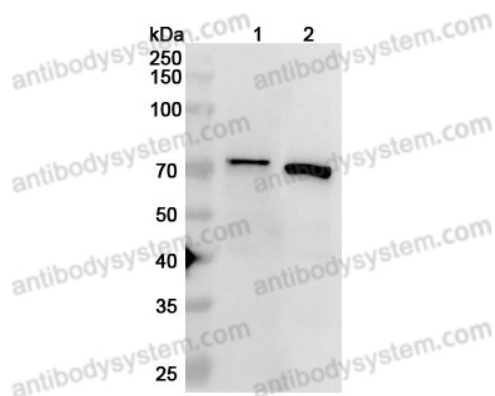


Anti-IGF2BP3 Polyclonal Antibody

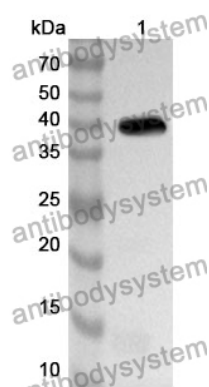
Summary

Catalog No.	PHA11401
Host species	Rabbit
Tested applications	ELISA: 1:4000-1:8000, IHC: 1:50-1:100, WB: 1:1000-1:4000
Species reactivity	Human, Mouse, Rat
Immunogen	E. coli - derived recombinant Human IGF2BP3 (Asn2-Ile343).
Form	Liquid
Storage buffer	0.01M PBS, pH 7.4, 50% Glycerol, 0.05% Proclin 300.
Clonality	Polyclonal
Isotype	IgG
Applications	ELISA, IHC, WB
Target	Insulin-like growth factor 2 mRNA-binding protein 3,VICKZ3,IGF2BP3,IMP3,KH domain-containing protein overexpressed in cancer,IMP-3,VICKZ family member 3,IGF-II mRNA-binding protein 3,KOC1,hKOC,IGF2 mRNA-binding protein 3
Purification	Purified by antigen affinity column.
Accession	O00425
Stability and Storage	Use a manual defrost freezer and avoid repeated freeze thaw cycles. Store at 2 to 8°C for frequent use. Store at -20 to -80°C for twelve months from the date of receipt.
Note	For research use only.

Data Image



WESTERN BLOT



Western Blot

Various lysates were subjected to SDS PAGE followed by western blot with IGF2BP3 antibody (PHA11401) at 1 μ g/ml.

Lane 1: NIH3T3 cell lysate

Lane 2: K562 cell lysate

Second Ab: Goat Anti-Rabbit IgG H&L Polyclonal antibody, HRP (PTB96431) at 0.1 μ g/mL.

Predict MW: 64 KDa

Observed MW: 70 kDa

Recombinant Protein lysates were subjected to SDS PAGE followed by western blot with IGF2BP3 antibody (PHA11401) at 1 μ g/ml.

Lane 1: Recombinant Protein

Second Ab: Goat Anti-Rabbit IgG H&L Polyclonal antibody, HRP (PTB96431) at 0.1 μ g/mL.

Predict MW: 40 kDa

Observed MW: 40 kDa