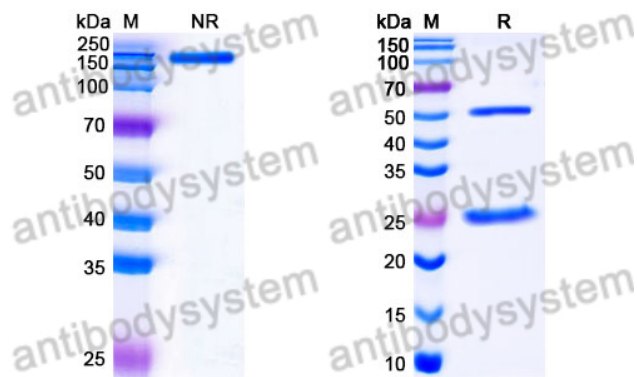


Mouse IgG2b Isotype Control Antibody (KLH)

Summary

Catalog No.	FMB96810
Clone ID	KLH
Host species	Mouse
Conjugation	Unconjugated
Form	Liquid
Storage buffer	0.01M PBS, pH 7.4.
Concentration	1 mg/ml
Purity	>95% as determined by SDS-PAGE.
Clonality	Monoclonal
Isotype	IgG2b
Applications	FCM, Isotype Control, In vivo Control
Purification	Protein A/G purified from cell culture supernatant.
Endotoxin level	Please contact with the lab for this information.
Stability and Storage	Use a manual defrost freezer and avoid repeated freeze-thaw cycles. Store at 4°C short term (1-2 weeks). Store at -20°C 12 months. Store at -80°C long term.
Note	For research use only.

Data Image



SDS PAGE for Mouse IgG2b Isotype Control
Antibody (KLH)

SDS-PAGE