

Anti-Human CD62P/SELP Antibody (SelG1)

Summary

Catalog No.	FHD15110
Clone ID	SelG1
Host species	Human
Conjugation	Unconjugated
Species reactivity	Human
Form	Liquid
Storage buffer	0.01M PBS, pH 7.4.
Concentration	6.06 mg/ml
Purity	>95% as determined by SDS-PAGE.
Clonality	Monoclonal
Isotype	IgG2, kappa
Applications	ELISA, FCM
Target	Leukocyte-endothelial cell adhesion molecule 3, Platelet activation dependent granule-external membrane protein, Granule membrane protein 140, GMP-140, CD62P, SELP, GRMP, PADGEM, CD62 antigen-like family member P, LECAM3, P-selectin, GMRP
Purification	Protein A/G purified from cell culture supernatant.
Endotoxin level	Please contact with the lab for this information.
Accession	P16109

Recombinant Proteins & Antibodies

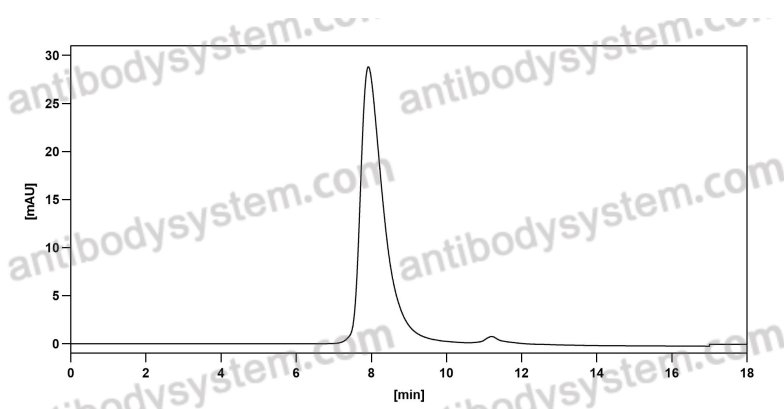
Stability and Storage

Use a manual defrost freezer and avoid repeated freeze-thaw cycles.

Store at 4°C short term (1-2 weeks). Store at -20°C 12 months. Store at -80°C long term.

Note

For research use only.

Data Image

SEC-HPLC

The purity of this product is >95% as determined by SEC-HPLC.