

Anti-Human CD42b/GP1BA Antibody (5G6)

Summary

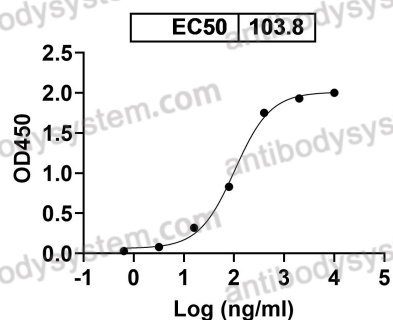
Catalog No.	FHC25710
Clone ID	5G6
Host species	Mouse
Conjugation	Unconjugated
Species reactivity	Human
Form	Liquid
Storage buffer	0.01M PBS, pH 7.4.
Concentration	1.48 mg/ml
Purity	>95% as determined by SDS-PAGE.
Clonality	Monoclonal
Isotype	IgG1, kappa
Applications	FCM, WB
Target	CD42b, GP-Ib alpha, Antigen CD42b-alpha, GPIb-alpha, GPIbA, Glycoprotein Ibalpha, Platelet glycoprotein Ib alpha chain, GP1BA
Purification	Protein A/G purified from cell culture supernatant.
Endotoxin level	Please contact with the lab for this information.
Accession	P07359
Stability and Storage	Use a manual defrost freezer and avoid repeated freeze-thaw cycles. Store at 4°C short term (1-2 weeks). Store at -20°C 12 months. Store at -80°C long term.

Note

For research use only.

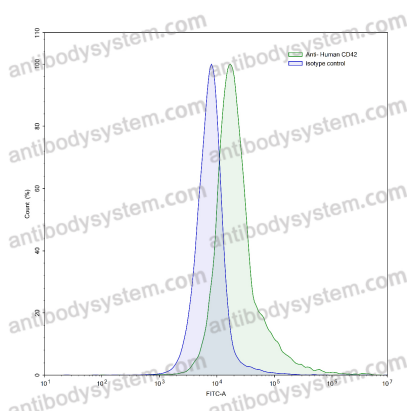
Data Image

**Anti-Human CD42b Antibody (5G6)
binds with Human CD42b**



Bioactivity

Detects CD42b/GP1BA in indirect ELISAs.



Flow-cytometry

Flow-cytometry using anti-human CD42 antibody. Human peripheral blood monocytes were stained with an irrelevant antibody (Blue Histogram) or an anti-human CD42 antibody monoclonal antibody (Catalog # FHC25710, Green Histogram) at a concentration of 5 µg/ml for 30 mins at RT. After washing, bound antibody was detected using a FITC conjugated goat anti-mouse antibody (Catalog # PMB96441) and cells analysed on a NovoCyt Flow Cytometer.