

Anti-Human CD367/CLEC4A Antibody (9E8#)

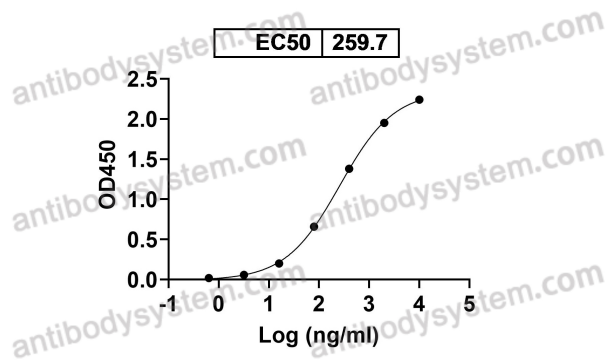
Summary

Catalog No.	FHJ94910
Clone ID	9E8#
Host species	Mouse
Conjugation	Unconjugated
Species reactivity	Human
Form	Liquid
Storage buffer	0.01M PBS, pH 7.4.
Concentration	1 mg/ml
Purity	>95% as determined by SDS-PAGE.
Clonality	Monoclonal
Isotype	IgG1, kappa
Applications	FCM
Target	C-type lectin DDB27, CLECSF6, CLEC4A, LLIR, CD367, Lectin-like immunoreceptor, DCIR, C-type lectin domain family 4 member A, Dendritic cell immunoreceptor, C-type lectin superfamily member 6
Purification	Protein A/G purified from cell culture supernatant.
Endotoxin level	Please contact with the lab for this information.
Accession	Q9UMR7

Stability and Storage Use a manual defrost freezer and avoid repeated freeze-thaw cycles.
Store at 4°C short term (1-2 weeks). Store at -20°C 12 months. Store at -80°C long term.

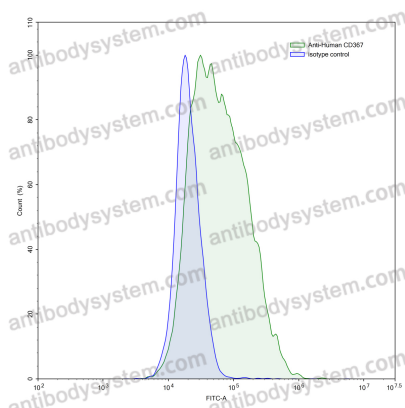
Note For research use only.

Data Image



Detects CD367/CLEC4A in indirect ELISAs.

Bioactivity



Flow-cytometry

Flow-cytometry using anti-human CD367 antibody. CD367 Transfected CHO cells were stained with an irrelevant antibody (Blue Histogram) or an anti-human CD367 antibody monoclonal antibody (Catalog # FHJ94910, Green Histogram) at a concentration of 5 µg/ml for 30 mins at RT. After washing, bound antibody was detected using a FITC conjugated goat anti-mouse antibody (Catalog # PMB96441) and cells analysed on a NovoCyte Flow Cytometer.