

# Anti-Human CD24 Antibody (SWA11)

## Summary

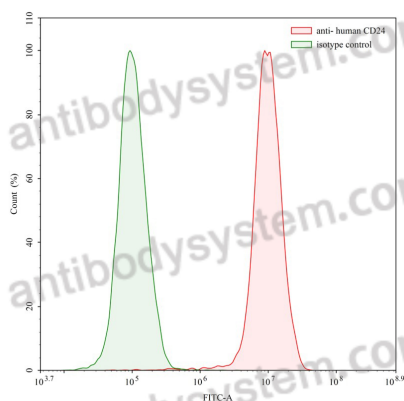
---

<b>Catalog No.</b>	FHD65210
<b>Clone ID</b>	SWA11
<b>Host species</b>	Mouse
<b>Conjugation</b>	Unconjugated
<b>Species reactivity</b>	Human
<b>Form</b>	Liquid
<b>Storage buffer</b>	100 mM Pro-Ac, 20 mM Arg, pH 5.0
<b>Concentration</b>	3.3 mg/ml
<b>Purity</b>	>95% as determined by SDS-PAGE.
<b>Clonality</b>	Monoclonal
<b>Isotype</b>	IgG1, kappa
<b>Applications</b>	FCM, IHC, IF, RIA
<b>Target</b>	Signal transducer CD24, CD24, CD24A, Small cell lung carcinoma cluster 4 antigen
<b>Purification</b>	Protein A/G purified from cell culture supernatant.
<b>Endotoxin level</b>	Please contact with the lab for this information.
<b>Accession</b>	P25063
<b>Stability and Storage</b>	Use a manual defrost freezer and avoid repeated freeze-thaw cycles. Store at 4°C short term (1-2 weeks). Store at -20°C 12 months. Store at -80°C long term.

**Note**

For research use only.

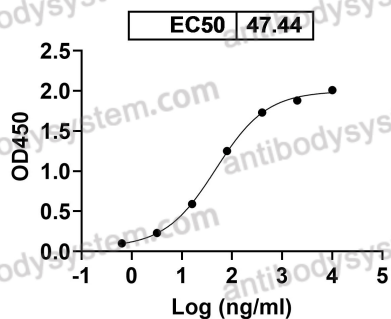
## Data Image



Flow-cytometry

Flow-cytometry using anti- human CD24 antibody. Human SK-BR-3 cell line were stained with an irrelevant antibody (Green Histogram) or an anti-human CD24 antibody monoclonal antibody (Catalog # FHD65210 , Red Histogram) at a concentration of 20 µg/ml for 30 mins at RT. After washing, bound antibody was detected using a FITC conjugated goat anti-mouse antibody (Catalog # PMB96441) and cells analysed on a NovoCyt Flow Cytometer.

**Anti-Human CD24 Antibody (SWA11) binds with Human CD24**



Bioactivity

Detects CD24 in indirect ELISAs.