

# Anti-Human CD159a/KLRC1 Antibody (Z270)

## Summary

---

<b>Catalog No.</b>	FHD71910
<b>Clone ID</b>	Z270
<b>Host species</b>	Mouse
<b>Conjugation</b>	Unconjugated
<b>Species reactivity</b>	Human
<b>Form</b>	Liquid
<b>Storage buffer</b>	0.01M PBS, pH 7.4.
<b>Concentration</b>	1.68 mg/ml
<b>Purity</b>	>95% as determined by SDS-PAGE.
<b>Clonality</b>	Monoclonal
<b>Isotype</b>	IgG1, kappa
<b>Applications</b>	ELISA, FCM, WB
<b>Target</b>	KLRC1, NKG2-A/NKG2-B type II integral membrane protein, NKG2-A/B-activating NK receptor, CD159 antigen-like family member A, CD159a, NK cell receptor A, NKG2A
<b>Purification</b>	Protein A/G purified from cell culture supernatant.
<b>Endotoxin level</b>	Please contact with the lab for this information.
<b>Accession</b>	P26715

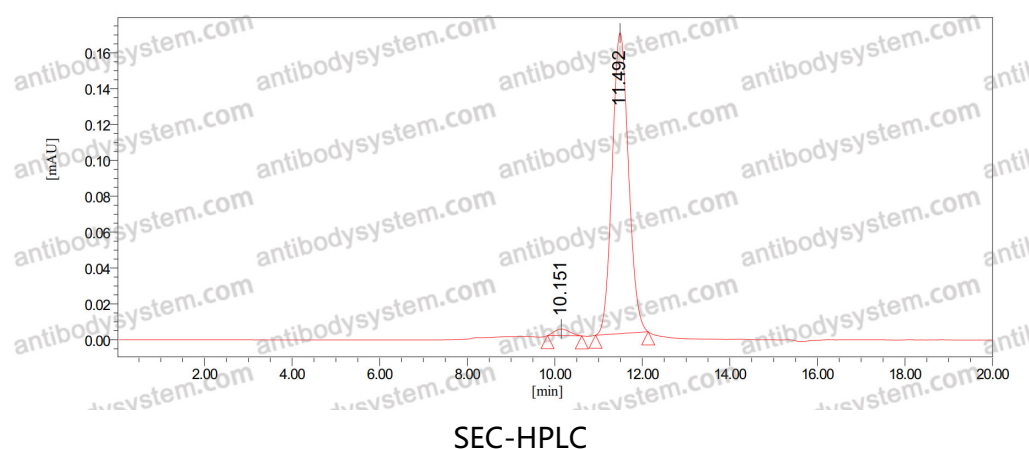
**Stability and Storage**

Use a manual defrost freezer and avoid repeated freeze-thaw cycles.

Store at 4°C short term (1-2 weeks). Store at -20°C 12 months. Store at -80°C long term.

**Note**

For research use only.

**Data Image**

The purity of this product is >95% as determined by SEC-HPLC.