

Anti-Human CD156c/ADAM10 Antibody (11G2)

Summary

Catalog No.	FHA26610
Clone ID	11G2
Host species	Mouse
Conjugation	Unconjugated
Species reactivity	Human
Form	Liquid
Storage buffer	0.01M PBS, pH 7.4.
Concentration	1 mg/ml
Purity	>95% as determined by SDS-PAGE.
Clonality	Monoclonal
Isotype	IgG1, kappa
Applications	FCM, WB
Target	ADAM 10, Mammalian disintegrin-metalloprotease, CD156c, MADM, ADAM10, Kuzbanian protein homolog, KUZ, CDw156, Disintegrin and metalloproteinase domain-containing protein 10
Purification	Protein A/G purified from cell culture supernatant.
Endotoxin level	Please contact with the lab for this information.
Accession	O14672

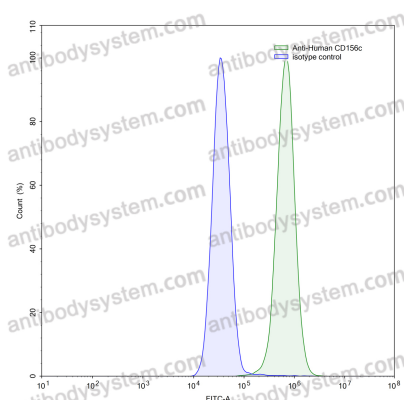
Stability and Storage

Use a manual defrost freezer and avoid repeated freeze-thaw cycles.

Store at 4°C short term (1-2 weeks). Store at -20°C 12 months. Store at -80°C long term.

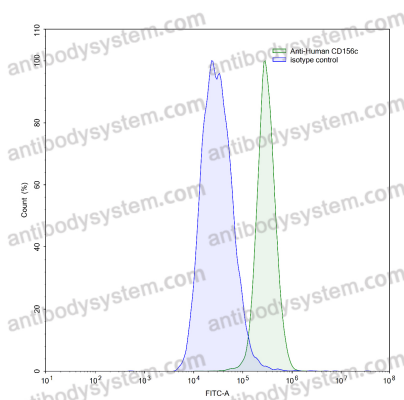
Note

For research use only.

Data Image

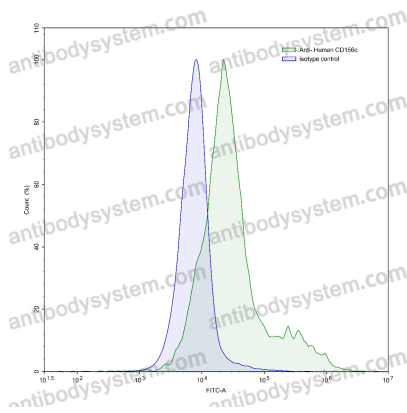
Flow-cytometry

Flow-cytometry using anti-human CD156c antibody. MCF7 cells were stained with an irrelevant antibody (Blue Histogram) or an anti-human CD156c antibody monoclonal antibody (Catalog # FHA26610, Green Histogram) at a concentration of 5 µg/ml for 30 mins at RT. After washing, bound antibody was detected using a FITC conjugated goat anti-mouse antibody (Catalog # PMB96441) and cells analysed on a NovoCyt Flow Cytometer.

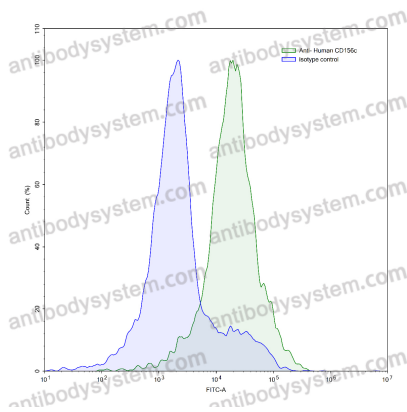


Flow-cytometry

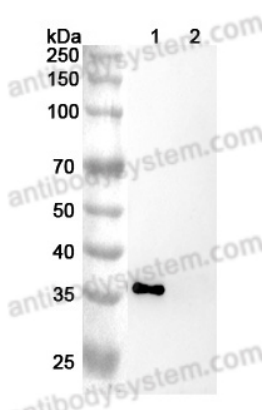
Flow-cytometry using anti-human CD156c antibody. THP-1 cells were stained with an irrelevant antibody (Blue Histogram) or an anti-human CD156c antibody monoclonal antibody (Catalog # FHA26610, Green Histogram) at a concentration of 5 µg/ml for 30 mins at RT. After washing, bound antibody was detected using a FITC conjugated goat anti-mouse antibody (Catalog # PMB96441) and cells analysed on a NovoCyt Flow Cytometer.



Flow-cytometry



Flow-cytometry



Western Blot

Flow-cytometry using anti-human CD156c antibody. Human peripheral blood lymphocytes were stained with an irrelevant antibody (Blue Histogram) or an anti-human CD156c antibody monoclonal antibody (Catalog # FHA26610, Green Histogram) at a concentration of 5 $\mu\text{g}/\text{ml}$ for 30 mins at RT. After washing, bound antibody was detected using a FITC conjugated goat anti-mouse antibody (Catalog # PMB96441) and cells analysed on a NovoCyt Flow Cytometer.

Flow-cytometry using anti-human CD156c antibody. Human peripheral blood lymphocytes were stained with an irrelevant antibody (Blue Histogram) or an anti-human CD156c antibody monoclonal antibody (Catalog # FHA26610, Green Histogram) at a concentration of 5 $\mu\text{g}/\text{ml}$ for 30 mins at RT. After washing, bound antibody was detected using a FITC conjugated goat anti-mouse antibody (Catalog # PMB96441) and cells analysed on a NovoCyt Flow Cytometer.

Various lysates were subjected to SDS PAGE followed by western blot with CD156c antibody (FHA26610) at 1 $\mu\text{g}/\text{ml}$.

Lane 1: CD156c transfected HEK293 cell lysate

Lane 2: Non-transfected HEK293 cell lysate

Second Ab: Goat Anti-Mouse IgG H&L Polyclonal antibody, HRP (PMB96431) at 0.1 $\mu\text{g}/\text{mL}$.

Predict MW: 34 kDa

Observed MW: 34 kDa