

# Anti-Human CD146/MUC18/MCAM Antibody (C3.19.1)

## Summary

---

<b>Catalog No.</b>	FHE39710
<b>Clone ID</b>	C3.19.1
<b>Host species</b>	Mouse
<b>Conjugation</b>	Unconjugated
<b>Species reactivity</b>	Human
<b>Form</b>	Liquid
<b>Storage buffer</b>	0.01M PBS, pH 7.4.
<b>Concentration</b>	1 mg/ml
<b>Purity</b>	>95% as determined by SDS-PAGE.
<b>Clonality</b>	Monoclonal
<b>Isotype</b>	IgG2a, kappa
<b>Applications</b>	FCM
<b>Target</b>	CD146, Melanoma cell adhesion molecule, S-endo 1 endothelial-associated antigen, Melanoma-associated antigen A32, MUC18, MCAM, Melanoma-associated antigen MUC18, Cell surface glycoprotein MUC18, Cell surface glycoprotein P1H12
<b>Purification</b>	Protein A/G purified from cell culture supernatant.
<b>Endotoxin level</b>	Please contact with the lab for this information.
<b>Accession</b>	P43121

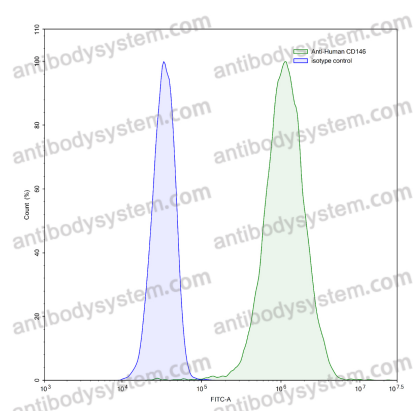
**Stability and Storage**

Use a manual defrost freezer and avoid repeated freeze-thaw cycles.

Store at 4°C short term (1-2 weeks). Store at -20°C 12 months. Store at -80°C long term.

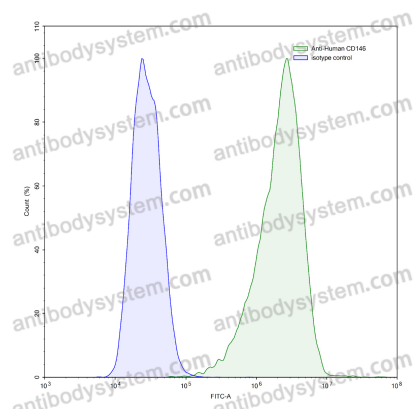
**Note**

For research use only.

**Data Image**

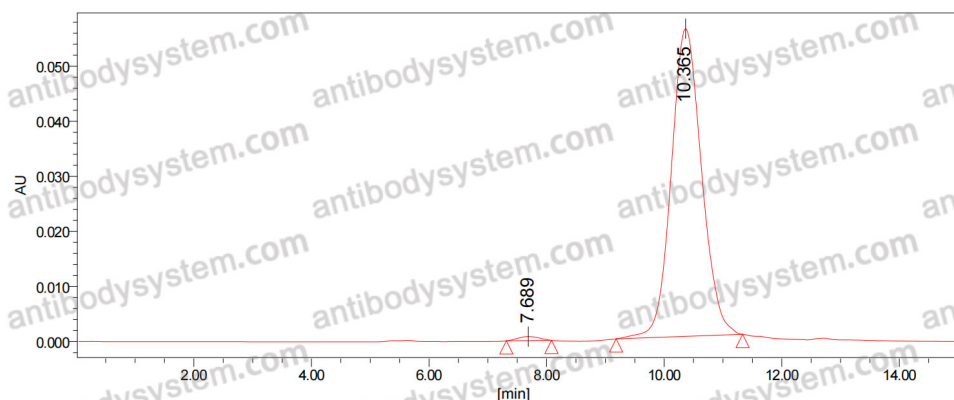
Flow-cytometry

Flow-cytometry using anti-human CD146 antibody. HeLa cells were stained with an irrelevant antibody (Blue Histogram) or an anti-human CD146 antibody monoclonal antibody (Catalog # FHE39710, Green Histogram) at a concentration of 5 µg/ml for 30 mins at RT. After washing, bound antibody was detected using a FITC conjugated goat anti-mouse antibody (Catalog # PMB96441) and cells analysed on a NovoCyte Flow Cytometer.



Flow-cytometry

Flow-cytometry using anti-human CD146 antibody. HUVEC cells were stained with an irrelevant antibody (Blue Histogram) or an anti-human CD146 antibody monoclonal antibody (Catalog # FHE39710, Green Histogram) at a concentration of 5 µg/ml for 30 mins at RT. After washing, bound antibody was detected using a FITC conjugated goat anti-mouse antibody (Catalog # PMB96441) and cells analysed on a NovoCyte Flow Cytometer.



SEC-HPLC

The purity of this product is >95% as determined by SEC-HPLC.