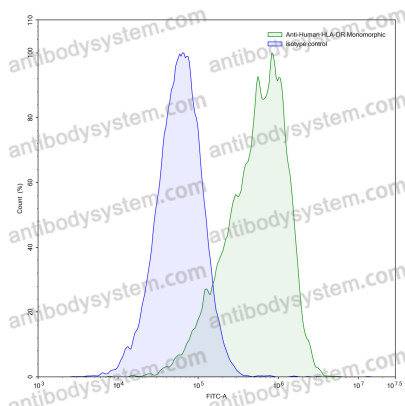


Anti-Human HLA-DR Monomorphic Antibody (L243)

Summary

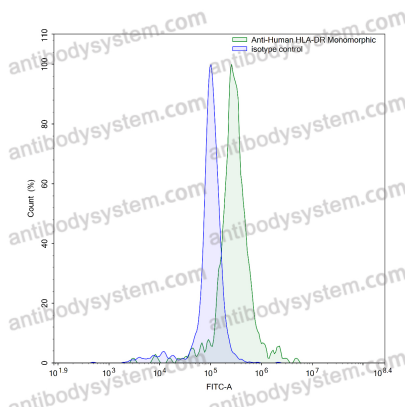
Catalog No.	FHM03310
Clone ID	L243
Host species	Mouse
Conjugation	Unconjugated
Species reactivity	Human
Form	Liquid
Storage buffer	0.01M PBS, pH 7.4.
Concentration	4.28 mg/ml
Purity	>95% as determined by SDS-PAGE.
Clonality	Monoclonal
Isotype	IgG1
Applications	FCM
Purification	Protein A/G purified from cell culture supernatant.
Endotoxin level	Please contact with the lab for this information.
Stability and Storage	Use a manual defrost freezer and avoid repeated freeze-thaw cycles. Store at 4°C short term (1-2 weeks). Store at -20°C 12 months. Store at -80°C long term.
Note	For research use only.

Data Image



Flow-cytometry

Flow-cytometry using anti-human HLA-DR Monomorphic antibody. Daudi cells were stained with an irrelevant antibody (Blue Histogram) or an anti-human HLA-DR Monomorphic antibody monoclonal antibody (Catalog # FHM03310, Green Histogram) at a concentration of 5 µg/ml for 30 mins at RT. After washing, bound antibody was detected using a FITC conjugated goat anti-mouse antibody (Catalog # PMB96441) and cells analysed on a NovoCyte Flow Cytometer.



Flow-cytometry

Flow-cytometry using anti-human HLA-DR Monomorphic antibody. Human peripheral blood monocytes were stained with an irrelevant antibody (Blue Histogram) or an anti-human HLA-DR Monomorphic antibody monoclonal antibody (Catalog # FHM03310, Green Histogram) at a concentration of 5 µg/ml for 30 mins at RT. After washing, bound antibody was detected using a FITC conjugated goat anti-mouse antibody (Catalog # PMB96441) and cells analysed on a NovoCyte Flow Cytometer.