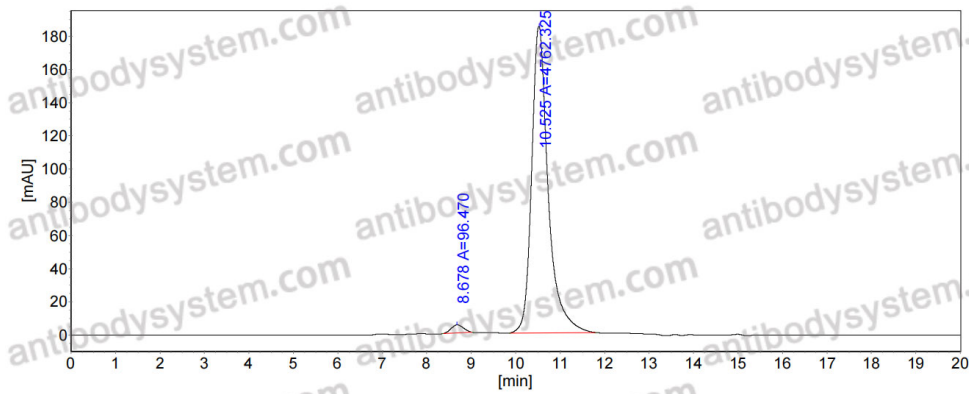


Anti-Human KLB/Beta-klotho Antibody (SAA0157)

Summary

Catalog No.	FHJ17810
Clone ID	SAA0157
Host species	Human
Conjugation	Unconjugated
Species reactivity	Human
Form	Liquid
Storage buffer	0.01M PBS, pH 7.4.
Concentration	1.28 mg/ml
Purity	>95% as determined by SDS-PAGE.
Clonality	Monoclonal
Isotype	IgG1, kappa
Applications	FCM
Target	Klotho beta-like protein, KLB, Beta-klotho, BetaKlotho, BKL
Purification	Protein A/G purified from cell culture supernatant.
Endotoxin level	Please contact with the lab for this information.
Accession	Q86Z14
Stability and Storage	Use a manual defrost freezer and avoid repeated freeze-thaw cycles. Store at 4°C short term (1-2 weeks). Store at -20°C 12 months. Store at -80°C long term.
Note	For research use only.

Data Image



SEC-HPLC

The purity of this product is
>95% as determined by SEC-
HPLC.