

Research Grade Anti-SARS-CoV-2 RBD Antibody (S2E12)

Summary

| | |
|---------------------------|---|
| Catalog No. | DVV00318 |
| Clone ID | S2E12 |
| Host species | Human |
| Species reactivity | SARS-CoV-2(2019-nCoV) |
| Form | Liquid |
| Storage buffer | 100 mM Pro-Ac, 20 mM Arg, pH 5.0 |
| Concentration | 0.97 mg/ml |
| Purity | >95% as determined by SDS-PAGE. |
| Clonality | Monoclonal |
| Isotype | IgG1-kappa |
| Applications | Research Grade Biosimilar |
| Target | Spike glycoprotein, S glycoprotein, E2, Peplomer protein, Spike protein S1, Spike protein S2, Spike protein S2', S, 2, Receptor-Binding Domain, RBD |
| Purification | Protein A/G purified from cell culture supernatant. |
| Endotoxin level | Please contact with the lab for this information. |
| Expression system | Mammalian Cells |
| Accession | P0DTC2-2 |

Stability and Storage

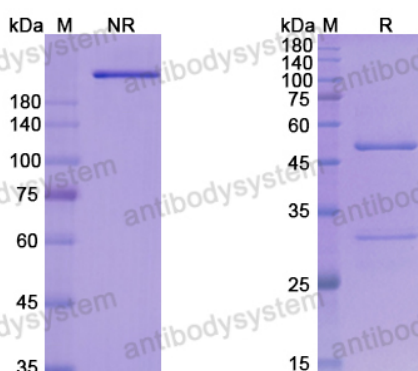
Use a manual defrost freezer and avoid repeated freeze-thaw cycles.

Store at 4°C short term (1-2 weeks). Store at -20°C 12 months. Store at -80°C long term.

Note

For research use only. Not suitable for clinical or therapeutic use.

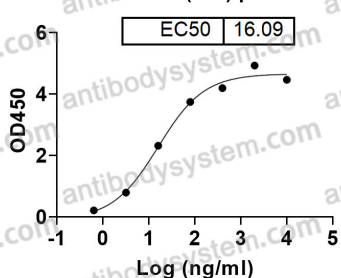
Data Image



SDS PAGE for Anti-SARS2 RBD
Antibody(S2E12)

SDS-PAGE

S2E12 binds with SARS-CoV-2
S - Trimer (WT) protein



Detects SARS-CoV-2 S - Trimer (WT) Protein in
indirect ELISA.

Bioactivity