

Anti-HCV NS1/gp68/gp70/Envelope glycoprotein E2 Antibody (HC33.1)

Summary

Catalog No.	RVV08610
Clone ID	HC33.1
Host species	Human
Species reactivity	Hepatitis C virus genotype 1a (isolate H77) (HCV)
Form	Liquid
Storage buffer	0.01M PBS, pH 7.4.
Concentration	4.18 mg/ml
Purity	>95% as determined by SDS-PAGE.
Clonality	Monoclonal
Isotype	IgG1, kappa
Applications	ELISA, Neutralization
Target	NS1, gp68, gp70, Envelope glycoprotein E2, Genome polyprotein
Purification	Protein A/G purified from cell culture supernatant.
Endotoxin level	Please contact with the lab for this information.
Expression system	Mammalian Cells
Accession	P27958-2

Recombinant Proteins & Antibodies

Stability and Storage

Use a manual defrost freezer and avoid repeated freeze-thaw cycles.

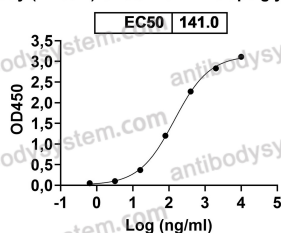
Store at 4°C short term (1-2 weeks). Store at -20°C 12 months. Store at -80°C long term.

Note

For research use only.

Data Image

Anti-HCV NS1/gp68/gp70/Envelope glycoprotein E2
Antibody (HC33.1) binds with Envelope glycoprotein E2



Detects Hepatitis C virus genotype 1a (isolate H77) (HCV) NS1/gp68/gp70/Envelope glycoprotein E2 in indirect ELISAs.

Bioactivity



SDS PAGE for HCV NS1/gp68/gp70/Envelope glycoprotein E2 Antibody (HC33.1)

SDS-PAGE