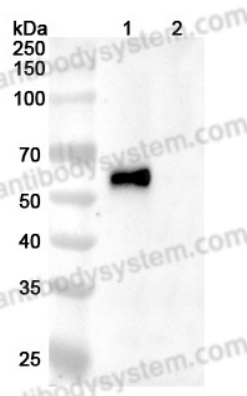


Anti-LASV GPC Antibody (12.1F)

Summary

Catalog No.	RVV04306
Clone ID	12.1F
Host species	Human
Species reactivity	Lassa virus (strain Mouse/Sierra Leone/Josiah/1976) (LASV)
Form	Liquid
Storage buffer	0.01M PBS, pH 7.4.
Concentration	2.36 mg/ml
Purity	>95% as determined by SDS-PAGE.
Clonality	Monoclonal
Isotype	IgG1, kappa
Applications	ELISA, Neutralization, WB
Target	Pre-glycoprotein polyprotein GP complex, Pre-GP-C, GPC, GP-C
Purification	Protein A/G purified from cell culture supernatant.
Endotoxin level	Please contact with the lab for this information.
Expression system	Mammalian Cells
Accession	P08669
Stability and Storage	Use a manual defrost freezer and avoid repeated freeze-thaw cycles. Store at 4°C short term (1-2 weeks). Store at -20°C 12 months. Store at -80°C long term.
Note	For research use only.

Data Image



Western Blot

Various lysates were subjected to SDS PAGE followed by western blot with GPC antibody (RVV04306) at 1 µg/ml.

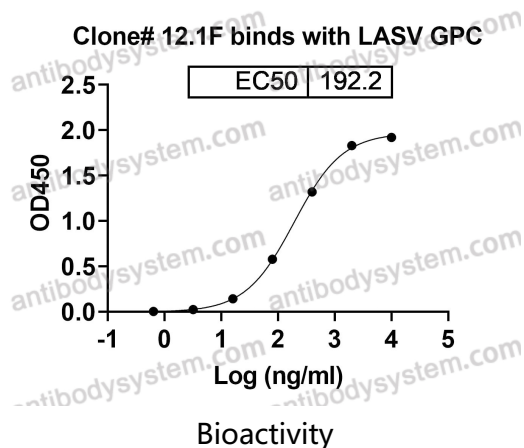
Lane 1: GPC transfected HEK293 cell lysate

Lane 2: Non-transfected HEK293 cell lysate

Second Ab: Goat Anti-Human IgG H&L Polyclonal antibody, HRP (PHB96431) at 0.1 µg/mL.

Predict MW: 55 kDa

Observed MW: 55 kDa



Detects LASV GPC protein ([EVV04301](#)) in indirect ELISAs.