

# Research Grade Anti-Human CD340/ERBB2/HER2 & CD3E Antibody (M802)

## Summary

---

<b>Catalog No.</b>	DHC09613
<b>Alternative Names</b>	Bispecific
<b>Clone ID</b>	M802
<b>Host species</b>	Humanized
<b>Species reactivity</b>	Human
<b>Form</b>	Liquid
<b>Storage buffer</b>	0.01M PBS, pH 7.4.
<b>Concentration</b>	1 mg/ml
<b>Purity</b>	>95% as determined by SDS-PAGE.
<b>Clonality</b>	Monoclonal
<b>Isotype</b>	IgG1
<b>Applications</b>	Research Grade Biosimilar
<b>Target</b>	p185erbB2, HER2, NGL, Tyrosine kinase-type cell surface receptor HER2, NEU, MLN 19, Proto-oncogene Neu, MLN19, ERBB2, Proto-oncogene c-ErbB-2, CD340, Receptor tyrosine-protein kinase erbB-2, Metastatic lymph node gene 19 protein, T3E, T-cell surface antigen T3/Leu-4 epsilon chain, CD3e, CD3E, T-cell surface glycoprotein CD3 epsilon chain
<b>Purification</b>	Protein A/G purified from cell culture supernatant.
<b>Endotoxin level</b>	Please contact with the lab for this information.

## Recombinant Proteins & Antibodies

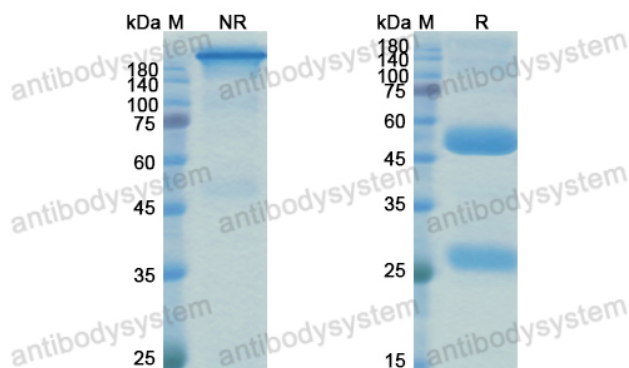
**Expression system** Mammalian Cells

**Accession** P04626 & P07766

**Stability and Storage** Use a manual defrost freezer and avoid repeated freeze-thaw cycles.  
Store at 4°C short term (1-2 weeks). Store at -20°C 12 months. Store at -80°C long term.

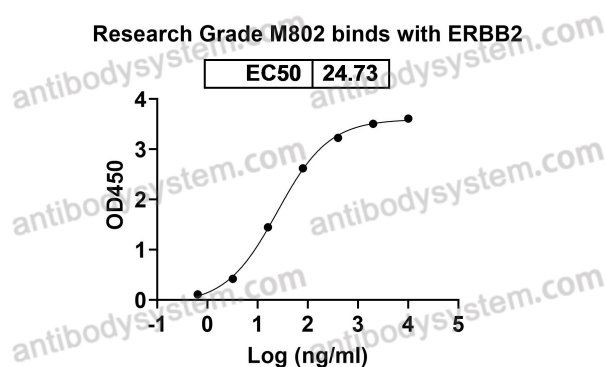
**Note** For research use only. Not suitable for clinical or therapeutic use.

## Data Image



SDS PAGE for M802

SDS-PAGE



Detects CD340/ERBB2/HER2/NEU in indirect ELISAs.

Bioactivity