

Research Grade Zilovertamab

Summary

Catalog No.	DHF90701
Alternative Names	cirmtuzumab, CAS: 2485779-13-1
Clone ID	Zilovertamab
Host species	Humanized
Species reactivity	Human
Form	Liquid
Storage buffer	0.01M PBS, pH 7.4.
Concentration	4.69mg/ml
Purity	>95% as determined by SDS-PAGE.
Clonality	Monoclonal
Isotype	IgG1-Kappa
Applications	Research Grade Biosimilar
Target	Neurotrophic tyrosine kinase, receptor-related 1, Inactive tyrosine-protein kinase transmembrane receptor ROR1, NTRKR1, ROR1
Purification	Protein A/G purified from cell culture supernatant.
Endotoxin level	Please contact with the lab for this information.
Expression system	Mammalian Cells
Accession	Q01973

Stability and Storage

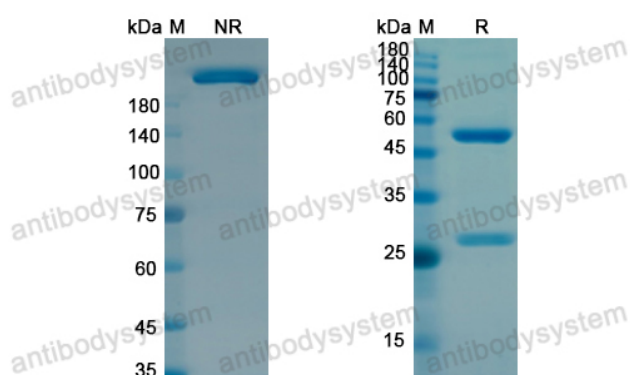
Use a manual defrost freezer and avoid repeated freeze-thaw cycles.

Store at 4°C short term (1-2 weeks). Store at -20°C 12 months. Store at -80°C long term.

Note

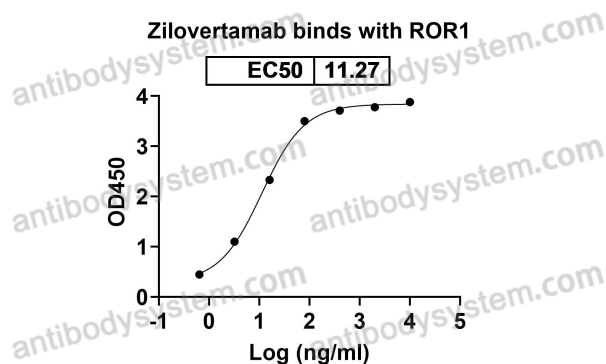
For research use only. Not suitable for clinical or therapeutic use.

Data Image



SDS PAGE for Zilovetamab

SDS-PAGE



Detected ROR1 in indirect ELISAs.

Bioactivity