

Anti-HLA-A2-peptide (LLFGYPVYV) Complex (T3F2)

Summary

Catalog No.	RHM03018
Clone ID	T3F2
Host species	Mouse
Species reactivity	Human
Form	Liquid
Storage buffer	0.01M PBS, pH 7.4.
Concentration	2.03 mg/ml
Purity	>95% as determined by SDS-PAGE.
Clonality	Monoclonal
Isotype	IgG1
Applications	ELISA
Target	HLAA,Human leukocyte antigen A,HLA class I histocompatibility antigen,A alpha chain,HLA-A,Protein Tax-1,Protein X-LOR,Protein PX,Trans-activating transcriptional regulatory protein of HTLV-1,Tax
Purification	Protein A/G purified from cell culture supernatant.
Endotoxin level	Please contact with the lab for this information.
Expression system	Mammalian Cells
Accession	P04439 & P03409

Recombinant Proteins & Antibodies

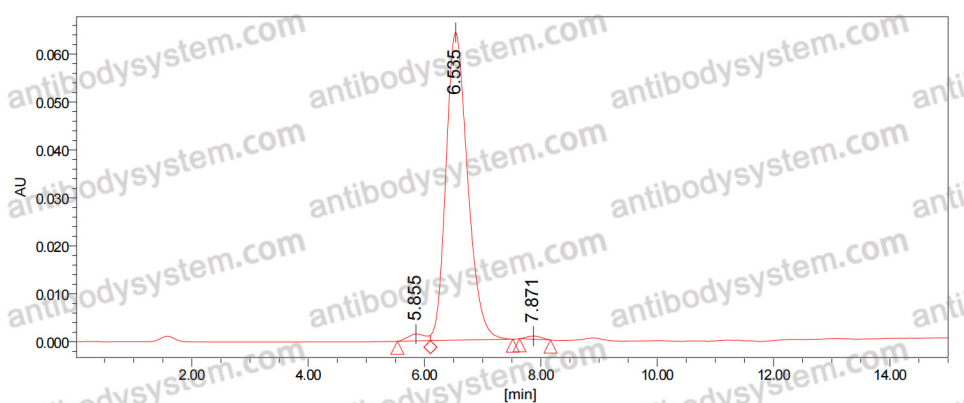
Stability and Storage

Use a manual defrost freezer and avoid repeated freeze-thaw cycles.

Store at 4°C short term (1-2 weeks). Store at -20°C 12 months. Store at -80°C long term.

Note

For research use only.

Data Image

SEC-HPLC

The purity of this product is >95% as determined by SEC-HPLC.