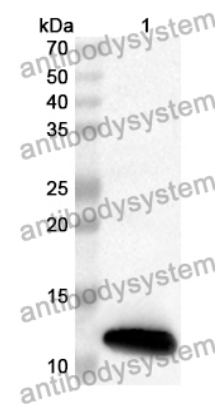


Anti-SLCO1B1/LST-1/OATP-2 Polyclonal Antibody

Summary

Catalog No.	PHK07601
Host species	Rabbit
Tested applications	ELISA: 1:4000-1:8000, IHC: 1:50-1:100, WB: 1:1000-1:4000
Species reactivity	Human
Immunogen	E. coli - derived recombinant Human SLCO1B1/LST-1/OATP-2 (Phe426-Phe537).
Form	Liquid
Storage buffer	0.01M PBS, pH 7.4, 50% Glycerol, 0.05% Proclin 300.
Clonality	Polyclonal
Isotype	IgG
Applications	ELISA, IHC, WB
Target	LST1,OATP1B1,OATP2,SLCO1B1,Solute carrier family 21 member 6,OATP-2,Sodium-independent organic anion-transporting polypeptide 2,LST-1,SLC21A6,OATP-C,OATPC,Solute carrier organic anion transporter family member 1B1,Liver-specific organic anion transporter 1
Purification	Purified by antigen affinity column.
Accession	Q9Y6L6
Stability and Storage	Use a manual defrost freezer and avoid repeated freeze thaw cycles. Store at 2 to 8°C for frequent use. Store at -20 to -80°C for twelve months from the date of receipt.
Note	For research use only.

Data Image



WESTERN BLOT

Recombinant Protein lysates were subjected to SDS PAGE followed by western blot with SLCO1B1/LST-1/OATP-2 antibody (PHK07601) at 1 µg/ml.

Lane 1: Recombinant protein

Second Ab: Goat Anti-Rabbit IgG H&L Polyclonal antibody, HRP (PTB96431) at 0.1 µg/mL.

Predict MW: 12 kDa

Observed MW: 12 kDa