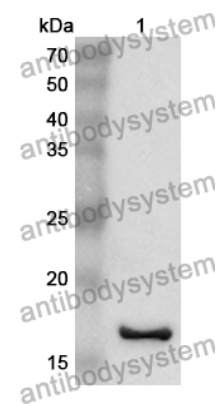


Anti-IL36RN Polyclonal Antibody

Summary

Catalog No.	PHJ72801
Host species	Rabbit
Tested applications	ELISA: 1:4000-1:8000, IHC: 1:50-1:100, WB: 1:1000-1:4000
Species reactivity	Human, Mouse, Rat
Immunogen	E. coli - derived recombinant Human IL36RN (Lys12-Phe151).
Form	Liquid
Storage buffer	0.01M PBS, pH 7.4, 50% Glycerol, 0.05% Proclin 300.
Clonality	Polyclonal
Isotype	IgG
Applications	ELISA, IHC, WB
Target	FIL1D,Interleukin-1 family member 5,IL-36Ra,IL1HY1,Interleukin-36 receptor antagonist protein,IL1RP3,IL-1RP3,IL-1ra homolog 1,Interleukin-1-like protein 1,IL-1-related protein 3,IL1L1,Interleukin-1 HY1,IL-1HY1,Interleukin-1 delta,FIL1 delta,IL-1 delta,IL-1L1,Interleukin-1 receptor antagonist homolog 1,IL36RN,IL1F5,IL-1F5
Purification	Purified by antigen affinity column.
Accession	Q9UBH0
Stability and Storage	Use a manual defrost freezer and avoid repeated freeze thaw cycles. Store at 2 to 8°C for frequent use. Store at -20 to -80°C for twelve months from the date of receipt.
Note	For research use only.

Data Image



WESTERN BLOT

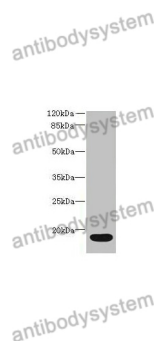
Recombinant Protein lysates were subjected to SDS PAGE followed by western blot with IL36RN antibody (PHJ72801) at 1 µg/ml.

Lane 1: Recombinant protein

Second Ab: Goat Anti-Rabbit IgG H&L Polyclonal antibody, HRP (PTB96431) at 0.1 µg/mL.

Predict MW: 18 kDa

Observed MW: 18 kDa



Western Blot

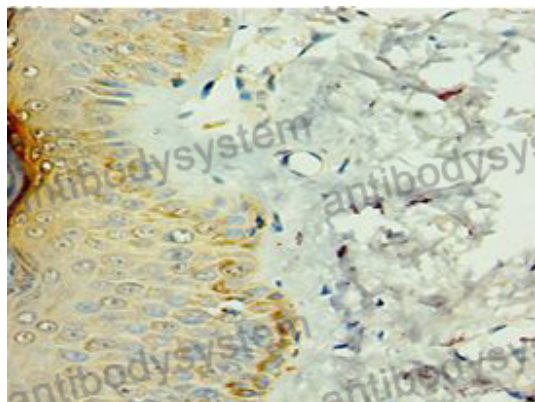
Various lysates were subjected to SDS PAGE followed by western blot with IL36RN antibody (PHJ72801) at 1 µg/ml.

Lane 1: Mouse stomach

Second Ab: Goat Anti-Rabbit IgG H&L Polyclonal antibody, HRP (PTB96431) at 0.1 µg/mL.

Predict MW: 17 kDa

Observed MW: 17 kDa



Immunohistochemical

Immunohistochemical analysis of human skin stained for IL36RN with PHJ72801.