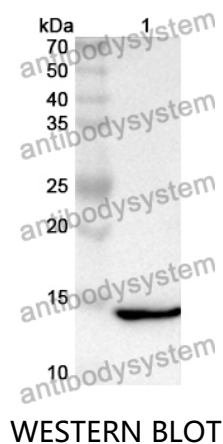


Anti-GDF15 Polyclonal Antibody

Summary

Catalog No.	PHJ48301
Host species	Rabbit
Tested applications	ELISA: 1:4000-1:8000, IHC: 1:50-1:100, WB: 1:1000-1:4000
Species reactivity	Human
Immunogen	E. coli - derived recombinant Human GDF15 (Ala197-Ile308).
Form	Liquid
Storage buffer	0.01M PBS, pH 7.4, 50% Glycerol, 0.05% Proclin 300.
Clonality	Polyclonal
Isotype	IgG
Applications	ELISA, IHC, WB
Target	PLAB,Placental bone morphogenetic protein,MIC1,NRG-1,PTGFB,NSAID-regulated gene 1 protein,GDF15,NAG-1,MIC-1,Prostate differentiation factor,NSAID-activated gene 1 protein,Growth/differentiation factor 15,Macrophage inhibitory cytokine 1,Placental TGF-beta,GDF-15,PDF
Purification	Purified by antigen affinity column.
Accession	Q99988
Stability and Storage	Use a manual defrost freezer and avoid repeated freeze thaw cycles. Store at 2 to 8°C for frequent use. Store at -20 to -80°C for twelve months from the date of receipt.
Note	For research use only.

Data Image



Recombinant Protein lysates were subjected to SDS PAGE followed by western blot with GDF15 antibody (PHJ48301) at 1 µg/ml.

Lane 1: Recombinant protein

Second Ab: Goat Anti-Rabbit IgG H&L Polyclonal antibody, HRP (PTB96431) at 0.1 µg/mL.

Predict MW: 15 kDa

Observed MW: 15 kDa