

# Anti-SCAF11 Polyclonal Antibody

## Summary

---

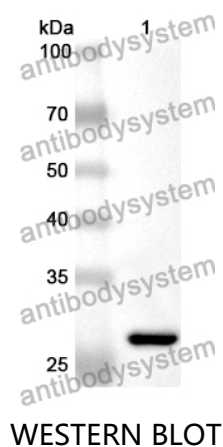
<b>Catalog No.</b>	PHJ45101
<b>Host species</b>	Rabbit
<b>Tested applications</b>	ELISA: 1:4000-1:8000, IHC: 1:50-1:100, WB: 1:1000-1:4000
<b>Species reactivity</b>	Human
<b>Immunogen</b>	E. coli - derived recombinant Human SCAF11 (Arg944-Trp1148).
<b>Form</b>	Liquid
<b>Storage buffer</b>	0.01M PBS, pH 7.4, 50% Glycerol, 0.05% Proclin 300.
<b>Clonality</b>	Polyclonal
<b>Isotype</b>	IgG
<b>Applications</b>	ELISA, IHC, WB
<b>Target</b>	SFRS2IP,SR-related and CTD-associated factor 11,SIP1,SRSF2IP,Splicing regulatory protein 129,CASP11,Splicing factor,arginine/serine-rich 2-interacting protein,CTD-associated SR protein 11,Renal carcinoma antigen NY-REN-40,SC35-interacting protein 1,Serine/arginine-rich splicing factor 2-interacting protein,SRrp129,Protein SCAF11,SCAF11,SRSF2-interacting protein
<b>Purification</b>	Purified by antigen affinity column.
<b>Accession</b>	Q99590
<b>Stability and Storage</b>	Use a manual defrost freezer and avoid repeated freeze thaw cycles. Store at 2 to 8°C for frequent use. Store at -20 to -80°C for twelve months from the date of receipt.

**Note**

For research use only.

## Data Image

---



Recombinant Protein lysates were subjected to SDS PAGE followed by western blot with SCAF11 antibody (PHJ45101) at 1 µg/ml.

Lane 1: Recombinant protein

Second Ab: Goat Anti-Rabbit IgG H&L Polyclonal antibody, HRP (PTB96431) at 0.1 µg/mL.

Predict MW: 26 kDa

Observed MW: 26 kDa