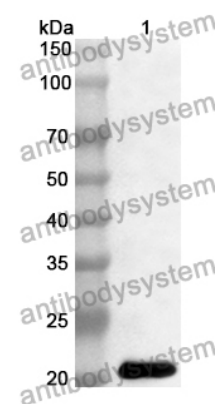


Anti-NLRP3 Polyclonal Antibody

Summary

Catalog No.	PHJ41101
Host species	Rabbit
Tested applications	ELISA: 1:4000-1:8000, IHC: 1:50-1:200, WB: 1:500-1:4000
Species reactivity	Human, Mouse, Rat
Immunogen	E. coli - derived recombinant Human NLRP3 (Met1-Arg157).
Form	Liquid
Storage buffer	0.01M PBS, pH 7.4, 50% Glycerol, 0.05% Proclin 300.
Concentration	0.65 mg/ml
Clonality	Polyclonal
Isotype	IgG
Applications	ELISA, IHC, WB
Target	NLRP3,NACHT,LRR and PYD domains-containing protein 3,Caterpillar protein 1.1,C1orf7,PYPAF1,PYRIN-containing APAF1-like protein 1,CIAS1,CLR1.1,Cold-induced autoinflammatory syndrome 1 protein,Cryopyrin,Angiotensin/vasopressin receptor AII/AVP-like,NALP3
Purification	Purified by antigen affinity column.
Accession	Q96P20
Stability and Storage	Use a manual defrost freezer and avoid repeated freeze thaw cycles. Store at 2 to 8°C for frequent use. Store at -20 to -80°C for twelve months from the date of receipt.
Note	For research use only.

Data Image



WESTERN BLOT

Recombinant Protein lysates were subjected to SDS PAGE followed by western blot with NLRP3 antibody (PHJ41101) at 1 µg/ml.

Lane 1: Recombinant protein

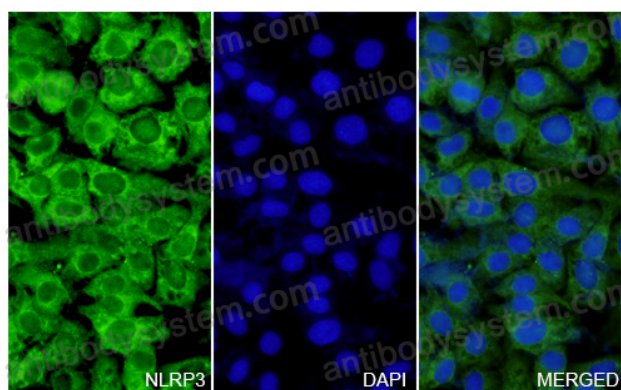
Second Ab: Goat Anti-Rabbit IgG H&L Polyclonal antibody, HRP (PTB96431) at 0.1 µg/mL.

Predict MW: 21 kDa

Observed MW: 21 kDa

NLRP3 in HepG2 Cell Line.

The HepG2 cells were fixed with 4% paraformaldehyde (20 min), and then blocked with 5% goat serum for 1h. And the cells were incubated for 2h at 37°C with NLRP3 (PHJ41101) at 13 µg/ml. The section was then incubated with Goat Anti-Rabbit IgG (Alexa Fluor-488) preabsorbed at 1/100 dilution (Shown in green) for 1 hour at room temperature. Nuclear DNA was labelled with DAPI (shown in blue).



Immunocytochemistry/ Immunofluorescence