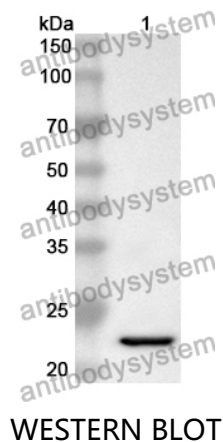


Anti-CD85j/LILRB1 Polyclonal Antibody

Summary

Catalog No.	PHJ26401
Host species	Rabbit
Tested applications	ELISA: 1:4000-1:8000, IHC: 1:50-1:100, WB: 1:1000-1:4000
Species reactivity	Human
Immunogen	E. coli - derived recombinant Human CD85j/LILRB1 (Ser223-His410).
Form	Liquid
Storage buffer	0.01M PBS, pH 7.4, 50% Glycerol, 0.05% Proclin 300.
Clonality	Polyclonal
Isotype	IgG
Applications	ELISA, IHC, WB
Target	LIR1,Immunoglobulin-like transcript 2,MIR7,CD85 antigen-like family member J,Monocyte/macrophage immunoglobulin-like receptor 7,ILT-2,Leukocyte immunoglobulin-like receptor subfamily B member 1,LIR-1,CD85j,ILT2,LILRB1,MIR-7,Leukocyte immunoglobulin-like receptor 1
Purification	Purified by antigen affinity column.
Accession	Q8NHL6
Stability and Storage	Use a manual defrost freezer and avoid repeated freeze thaw cycles. Store at 2 to 8°C for frequent use. Store at -20 to -80°C for twelve months from the date of receipt.
Note	For research use only.

Data Image



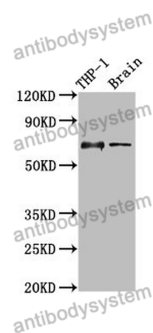
Recombinant Protein lysates were subjected to SDS PAGE followed by western blot with CD85j/LILRB1 antibody (PHJ26401) at 1 µg/ml.

Lane 1: Recombinant protein

Second Ab: Goat Anti-Rabbit IgG H&L Polyclonal antibody, HRP (PTB96431) at 0.1 µg/mL.

Predict MW: 23 kDa

Observed MW: 23 kDa



Various lysates were subjected to SDS PAGE followed by western blot with LILRB1 antibody (PHJ26401) at 1 µg/ml.

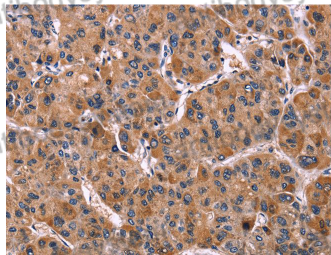
Lane 1: THP1

Lane 2: Rat brain

Second Ab: Goat Anti-Rabbit IgG H&L Polyclonal antibody, HRP (PTB96431) at 0.1 µg/mL.

Predict MW: 71 kDa

Observed MW: 71 kDa



Immunohistochemical analysis of human liver cancer stained for LILRB1 with PHJ26401.

Immunohistochemical