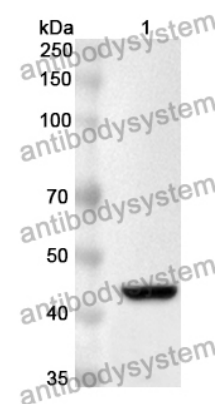


Anti-MAPK14 Polyclonal Antibody

Summary

Catalog No.	PHH28301
Host species	Rabbit
Tested applications	ELISA: 1:4000-1:8000, IHC: 1:50-1:100, WB: 1:1000-1:4000
Species reactivity	Human, Mouse, Rat
Immunogen	E. coli - derived recombinant Human MAPK14 (Met1-Ser360).
Form	Liquid
Storage buffer	0.01M PBS, pH 7.4, 50% Glycerol, 0.05% Proclin 300.
Clonality	Polyclonal
Isotype	IgG
Applications	ELISA, IHC, WB
Target	Stress-activated protein kinase 2a,Mitogen-activated protein kinase 14,Mitogen-activated protein kinase p38 alpha,SAPK2A,Cytokine suppressive anti-inflammatory drug-binding protein,CSBP,CSPB1,MAP kinase 14,MAP kinase MXI2,MAPK14,CSBP2,MAP kinase p38 alpha,MAPK 14,MXI2,CSAID-binding protein,MAX-interacting protein 2,CSBP1,SAPK2a
Purification	Purified by antigen affinity column.
Accession	Q16539
Stability and Storage	Use a manual defrost freezer and avoid repeated freeze thaw cycles. Store at 2 to 8°C for frequent use. Store at -20 to -80°C for twelve months from the date of receipt.
Note	For research use only.

Data Image



WESTERN BLOT

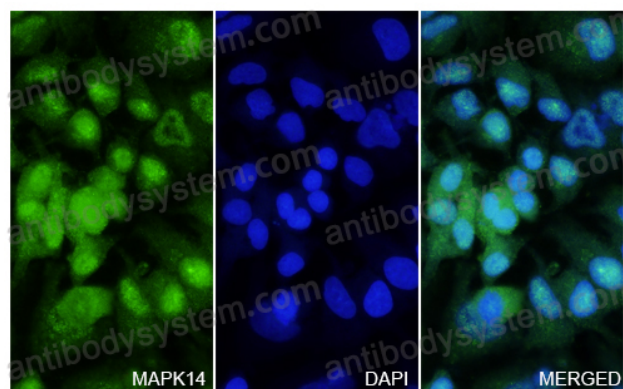
Recombinant Protein lysates were subjected to SDS PAGE followed by western blot with MAPK14 antibody (PHH28301) at 1 µg/ml.

Lane 1: Recombinant protein

Second Ab: Goat Anti-Rabbit IgG H&L Polyclonal antibody, HRP (PTB96431) at 0.1 µg/mL.

Predict MW: 44 kDa

Observed MW: 44 kDa



Immunocytochemistry/ Immunofluorescence

MAPK14 in Hela Cell Line.

The Hela cells were fixed with 4% paraformaldehyde (20 min), and then blocked with 5% goat serum for 1h. And the cells were incubated for 2h at 37°C with MAPK14 (PHH28301) at 19.2 µg/ml. The section was then incubated with Goat Anti-Rabbit IgG (Alexa Fluor-488) preabsorbed at 1/100 dilution (Shown in green) for 1 hour at room temperature. Nuclear DNA was labelled with DAPI (shown in blue).