

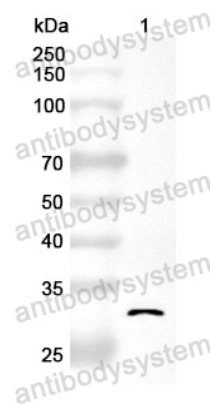
# Anti-RPS6KA1 Polyclonal Antibody

## Summary

---

<b>Catalog No.</b>	PHH09501
<b>Host species</b>	Rabbit
<b>Tested applications</b>	ELISA: 1:4000-1:8000, IHC: 1:50-1:100, WB: 1:1000-1:4000
<b>Species reactivity</b>	Human, Mouse, Rat
<b>Immunogen</b>	E. coli - derived recombinant Human RPS6KA1 (Phe62-Tyr321).
<b>Form</b>	Liquid
<b>Storage buffer</b>	0.01M PBS, pH 7.4, 50% Glycerol, 0.05% Proclin 300.
<b>Clonality</b>	Polyclonal
<b>Isotype</b>	IgG
<b>Applications</b>	ELISA, IHC, WB
<b>Target</b>	p90-RSK 1,Ribosomal S6 kinase 1,RSK1,p90RSK1,RPS6KA1,MAPKAP kinase 1a,MAPK-activated protein kinase 1a,RSK-1,MAPKAPK1A,MAP kinase-activated protein kinase 1a,MAPKAPK-1a,S6K-alpha-1,90 kDa ribosomal protein S6 kinase 1,Ribosomal protein S6 kinase alpha-1,p90S6K
<b>Purification</b>	Purified by antigen affinity column.
<b>Accession</b>	Q15418
<b>Stability and Storage</b>	Use a manual defrost freezer and avoid repeated freeze thaw cycles. Store at 2 to 8°C for frequent use. Store at -20 to -80°C for twelve months from the date of receipt.
<b>Note</b>	For research use only.

## Data Image



Western Blot

Recombinant Protein lysates were subjected to SDS PAGE followed by western blot with RPS6KA1 antibody (PHH09501) at 1 µg/ml.

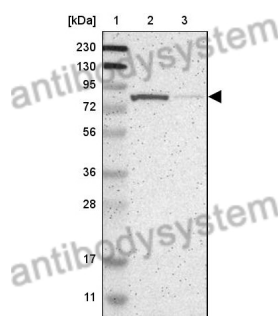
Lane 1: Recombinant protein

Second Ab: Goat Anti-Rabbit IgG H&L Polyclonal antibody, HRP (PTB96431) at 0.1 µg/mL.

Predict MW: 32 kDa

Observed MW: 32 kDa

Various lysates were subjected to SDS PAGE followed by western blot with RPS6KA1 antibody (PHH09501) at 1 µg/ml.



Western Blot

Lane 1: Marker

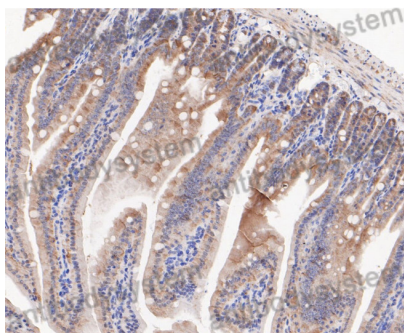
Lane 2: RT-4

Lane 3: U-251MG

Second Ab: Goat Anti-Rabbit IgG H&L Polyclonal antibody, HRP (PTB96431) at 0.1 µg/mL.

Predict MW: 83 kDa

Observed MW: 83 kDa



Immunohistochemical analysis of mouse colon stained for RPS6KA1 with PHH09501.

Immunohistochemical