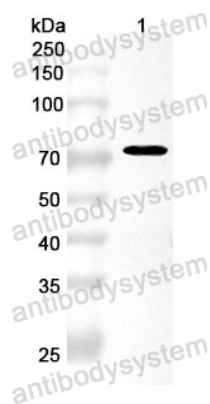


Anti-PSMD6 Polyclonal Antibody

Summary

Catalog No.	PHG97001
Host species	Rabbit
Tested applications	ELISA: 1:4000-1:8000, IHC: 1:50-1:100, WB: 1:1000-1:4000
Species reactivity	Human, Mouse, Rat
Immunogen	E. coli - derived recombinant Human PSMD6 (Met1-Met389).
Form	Liquid
Storage buffer	0.01M PBS, pH 7.4, 50% Glycerol, 0.05% Proclin 300.
Clonality	Polyclonal
Isotype	IgG
Applications	ELISA, IHC, WB
Target	KIAA0107,26S proteasome non-ATPase regulatory subunit 6,Phosphonoformate immuno-associated protein 4,26S proteasome regulatory subunit RPN7,PSMD6,Proteasome regulatory particle subunit p44S10,PFAAP4,p42A,26S proteasome regulatory subunit S10,Breast cancer-associated protein SGA-113M
Purification	Purified by antigen affinity column.
Accession	Q15008
Stability and Storage	Use a manual defrost freezer and avoid repeated freeze thaw cycles. Store at 2 to 8°C for frequent use. Store at -20 to -80°C for twelve months from the date of receipt.
Note	For research use only.

Data Image



Western Blot

Recombinant Protein lysates were subjected to SDS PAGE followed by western blot with PSMD6 antibody (PHG97001) at 1 μ g/ml.

Lane 1: Recombinant protein

Second Ab: Goat Anti-Rabbit IgG H&L Polyclonal antibody, HRP (PTB96431) at 0.1 μ g/mL.

Predict MW: 72 kDa

Observed MW: 72 kDa