

# Anti-CD167a/DDR1 Polyclonal Antibody

## Summary

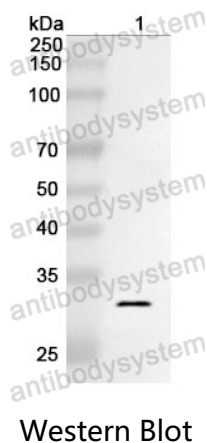
---

<b>Catalog No.</b>	PHG15801
<b>Host species</b>	Rabbit
<b>Tested applications</b>	ELISA: 1:4000-1:8000, IHC: 1:50-1:100, WB: 1:1000-1:4000
<b>Species reactivity</b>	Human, Mouse, Rat
<b>Immunogen</b>	E. coli - derived recombinant Human CD167a/DDR1 (His568-Phe829).
<b>Form</b>	Liquid
<b>Storage buffer</b>	0.01M PBS, pH 7.4, 50% Glycerol, 0.05% Proclin 300.
<b>Clonality</b>	Polyclonal
<b>Isotype</b>	IgG
<b>Applications</b>	ELISA, IHC, WB
<b>Target</b>	Protein-tyrosine kinase RTK-6,Protein-tyrosine kinase 3A,NTRK4,EDDR1,CAK,Tyrosine kinase DDR,Mammary carcinoma kinase 10,TRKE,Epithelial discoidin domain-containing receptor 1,CD167a,TRK E,Epithelial discoidin domain receptor 1,HGK2,CD167 antigen-like family member A,NEP,MCK-10,Tyrosine-protein kinase CAK,PTK3A,DDR1,Discoidin receptor tyrosine kinase,RTK6,Cell adhesion kinase
<b>Purification</b>	Purified by antigen affinity column.
<b>Accession</b>	Q08345
<b>Stability and Storage</b>	Use a manual defrost freezer and avoid repeated freeze thaw cycles. Store at 2 to 8°C for frequent use. Store at -20 to -80°C for twelve months from the date of receipt.

## Note

For research use only.

## Data Image



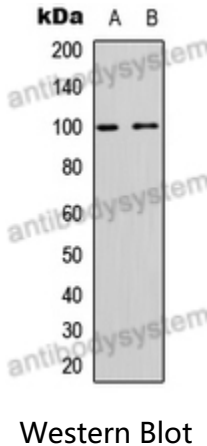
Recombinant Protein lysates were subjected to SDS PAGE followed by western blot with CD167a/DDR1 antibody (PHG15801) at 1 µg/ml.

Lane 1: Recombinant protein

Second Ab: Goat Anti-Rabbit IgG H&L Polyclonal antibody, HRP (PTB96431) at 0.1 µg/mL.

Predict MW: 31 kDa

Observed MW: 31 kDa



Various lysates were subjected to SDS PAGE followed by western blot with DDR1 antibody (PHG15801) at 1 µg/ml.

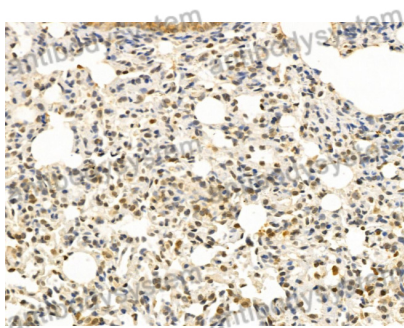
Lane 1: Jurkat

Lane 2: Rat muscle

Second Ab: Goat Anti-Rabbit IgG H&L Polyclonal antibody, HRP (PTB96431) at 0.1 µg/mL.

Predict MW: 101 kDa

Observed MW: 101 kDa



Immunohistochemical analysis of rat lung stained for DDR1 with PHG15801.

Immunohistochemical