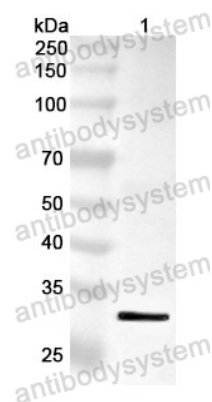


Anti-TAP1 Polyclonal Antibody

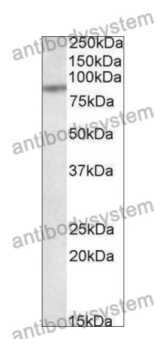
Summary

Catalog No.	PHF99501
Host species	Rabbit
Tested applications	ELISA: 1:4000-1:8000, IHC: 1:50-1:100, WB: 1:1000-1:4000
Species reactivity	Human
Immunogen	E. coli - derived recombinant Human TAP1 (Tyr525-Glu808).
Form	Liquid
Storage buffer	0.01M PBS, pH 7.4, 50% Glycerol, 0.05% Proclin 300.
Clonality	Polyclonal
Isotype	IgG
Applications	ELISA, IHC, WB
Target	TAP1,APT1,Peptide transporter involved in antigen processing 1,Really interesting new gene 4 protein,Peptide transporter TAP1,Peptide transporter PSF1,RING4,Antigen peptide transporter 1,PSF-1,ABCB2,Y3,Peptide supply factor 1,PSF1,ATP-binding cassette sub-family B member 2
Purification	Purified by antigen affinity column.
Accession	Q03518
Stability and Storage	Use a manual defrost freezer and avoid repeated freeze thaw cycles. Store at 2 to 8°C for frequent use. Store at -20 to -80°C for twelve months from the date of receipt.
Note	For research use only.

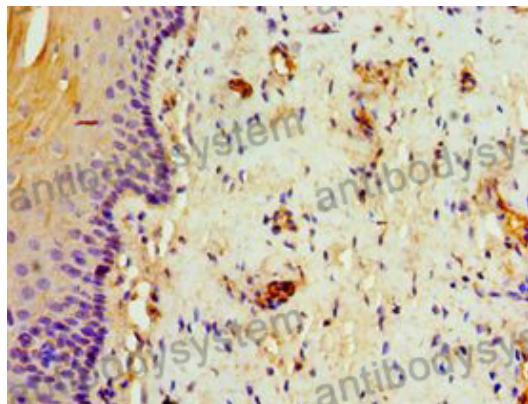
Data Image



Western Blot



Western Blot



Immunohistochemical

Recombinant Protein lysates were subjected to SDS PAGE followed by western blot with TAP1 antibody (PHF99501) at 1 µg/ml.

Lane 1: Recombinant protein

Second Ab: Goat Anti-Rabbit IgG H&L Polyclonal antibody, HRP (PTB96431) at 0.1 µg/mL.

Predict MW: 33 kDa

Observed MW: 33 kDa

Various lysates were subjected to SDS PAGE followed by western blot with TAP1 antibody (PHF99501) at 1 µg/ml.

Lane 1: MCF7

Second Ab: Goat Anti-Rabbit IgG H&L Polyclonal antibody, HRP (PTB96431) at 0.1 µg/mL.

Predict MW: 87 kDa

Observed MW: 87 kDa

Immunohistochemical analysis of human cervical carcinoma stained for TAP1 with PHF99501.