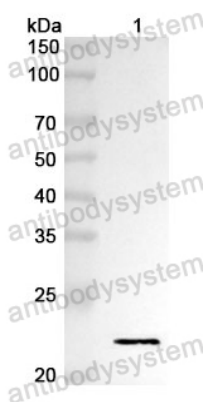


Anti-NRG1 Polyclonal Antibody

Summary

Catalog No.	PHF92901
Host species	Rabbit
Tested applications	ELISA: 1:4000-1:8000, IHC: 1:50-1:100, WB: 1:1000-1:4000
Species reactivity	Human, Rat
Immunogen	E. coli - derived recombinant Human NRG1 (Ser20-Cys212).
Form	Liquid
Storage buffer	0.01M PBS, pH 7.4, 50% Glycerol, 0.05% Proclin 300.
Clonality	Polyclonal
Isotype	IgG
Applications	ELISA, IHC, WB
Target	Glial growth factor, Neu differentiation factor, SMDF, Breast cancer cell differentiation factor p45, Pro-neuregulin-1, membrane-bound isoform, Acetylcholine receptor-inducing activity, ARIA, GGF, HRGA, Pro-NRG1, HGL, HRG, NDF, NRG1, Sensory and motor neuron-derived factor, Heregulin
Purification	Purified by antigen affinity column.
Accession	Q02297
Stability and Storage	Use a manual defrost freezer and avoid repeated freeze thaw cycles. Store at 2 to 8°C for frequent use. Store at -20 to -80°C for twelve months from the date of receipt.
Note	For research use only.

Data Image



Western Blot

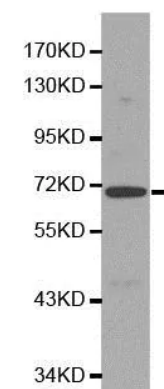
Recombinant Protein lysates were subjected to SDS PAGE followed by western blot with NRG1 antibody (PHF92901) at 1 μ g/ml.

Lane 1: Recombinant protein

Second Ab: Goat Anti-Rabbit IgG H&L Polyclonal antibody, HRP (PTB96431) at 0.1 μ g/mL.

Predict MW: 23 kDa

Observed MW: 23 kDa



Western Blot

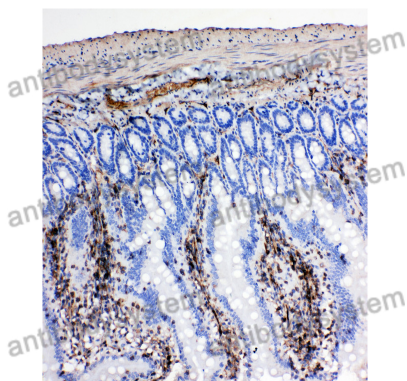
Various lysates were subjected to SDS PAGE followed by western blot with NRG1 antibody (PHF92901) at 1 μ g/ml.

Lane 1: MCF7

Second Ab: Goat Anti-Rabbit IgG H&L Polyclonal antibody, HRP (PTB96431) at 0.1 μ g/mL.

Predict MW: 70 kDa

Observed MW: 70 kDa



Immunohistochemical

Immunohistochemical analysis of rat intestine stained for NRG1 with PHF92901.