

Anti-MASP1 Polyclonal Antibody

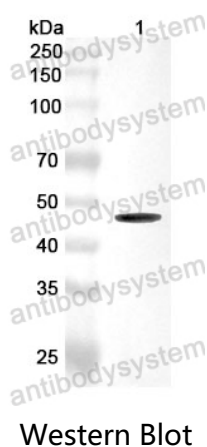
Summary

Catalog No.	PHE61101
Host species	Rabbit
Tested applications	ELISA: 1:4000-1:8000, IHC: 1:50-1:100, WB: 1:1000-1:4000
Species reactivity	Human, Mouse, Rat
Immunogen	E. coli - derived recombinant Human MASP1 (His20-Pro434).
Form	Liquid
Storage buffer	0.01M PBS, pH 7.4, 50% Glycerol, 0.05% Proclin 300.
Clonality	Polyclonal
Isotype	IgG
Applications	ELISA, IHC, WB
Target	Mannose-binding lectin-associated serine protease 1, CRARF, PRSS5, CRARF1, Mannose-binding protein-associated serine protease, Ra-reactive factor serine protease p100, Complement factor MASP-3, RaRF, MASP1, Mannan-binding lectin serine protease 1, Serine protease 5, Complement-activating component of Ra-reactive factor, MASP-1
Purification	Purified by antigen affinity column.
Accession	P48740
Stability and Storage	Use a manual defrost freezer and avoid repeated freeze thaw cycles. Store at 2 to 8°C for frequent use. Store at -20 to -80°C for twelve months from the date of receipt.

Note

For research use only.

Data Image



Recombinant Protein lysates were subjected to SDS PAGE followed by western blot with MASP1 antibody (PHE61101) at 1 µg/ml.

Lane 1: Recombinant protein

Second Ab: Goat Anti-Rabbit IgG H&L Polyclonal antibody, HRP (PTB96431) at 0.1 µg/mL.

Predict MW: 50 kDa

Observed MW: 50 kDa