

Anti-PIK3CG Polyclonal Antibody

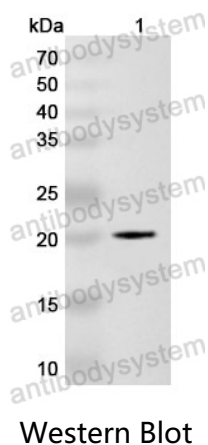
Summary

Catalog No.	PHE60901
Host species	Rabbit
Tested applications	ELISA: 1:4000-1:8000, IHC: 1:50-1:100, WB: 1:1000-1:4000
Species reactivity	Human, Mouse, Rat
Immunogen	E. coli - derived recombinant Human PIK3CG (Lys298-Leu467).
Form	Liquid
Storage buffer	0.01M PBS, pH 7.4, 50% Glycerol, 0.05% Proclin 300.
Clonality	Polyclonal
Isotype	IgG
Applications	ELISA, IHC, WB
Target	PtdIns-3-kinase subunit gamma, Phosphatidylinositol 4,5-bisphosphate 3-kinase catalytic subunit gamma isoform, PtdIns-3-kinase subunit p110-gamma, PI3Kgamma, p120-PI3K, Phosphatidylinositol 4,5-bisphosphate 3-kinase 110 kDa catalytic subunit gamma, PI3-kinase subunit gamma, PI3K-gamma, Phosphoinositide-3-kinase catalytic gamma polypeptide, Serine/threonine protein kinase PIK3CG, p110gamma, PIK3CG
Purification	Purified by antigen affinity column.
Accession	P48736
Stability and Storage	Use a manual defrost freezer and avoid repeated freeze thaw cycles. Store at 2 to 8°C for frequent use. Store at -20 to -80°C for twelve months from the date of receipt.

Note

For research use only.

Data Image



Recombinant Protein lysates were subjected to SDS PAGE followed by western blot with PIK3CG antibody (PHE60901) at 1 µg/ml.

Lane 1: Recombinant protein

Second Ab: Goat Anti-Rabbit IgG H&L Polyclonal antibody, HRP (PTB96431) at 0.1 µg/mL.

Predict MW: 22 kDa

Observed MW: 22 kDa