

Anti-CD158b2/KIR2DL3 Polyclonal Antibody

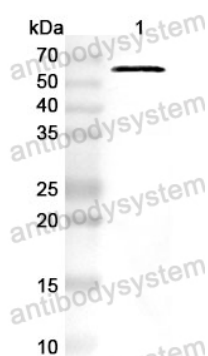
Summary

Catalog No.	PHE43601
Host species	Rabbit
Tested applications	ELISA: 1:4000-1:8000, IHC: 1:50-1:100, WB: 1:1000-1:4000
Species reactivity	Human
Immunogen	E. coli - derived recombinant Human CD158b2/KIR2DL3 (His22-Pro341).
Form	Liquid
Storage buffer	0.01M PBS, pH 7.4, 50% Glycerol, 0.05% Proclin 300.
Clonality	Polyclonal
Isotype	IgG
Applications	ELISA, IHC, WB
Target	NKAT2b,KIR2DL3,p58 natural killer cell receptor clone CL-6,p58.2 MHC class-I-specific NK receptor,CD158 antigen-like family member B2,MHC class I NK cell receptor,KIR-023GB,Killer inhibitory receptor cl 2-3,p58 NK receptor CL-6,CD158b2,Killer cell immunoglobulin-like receptor 2DL3,Natural killer-associated transcript 2,CD158B2,KIRCL23,NKAT-2,NKAT2a,NKAT2
Purification	Purified by antigen affinity column.
Accession	P43628
Stability and Storage	Use a manual defrost freezer and avoid repeated freeze thaw cycles. Store at 2 to 8°C for frequent use. Store at -20 to -80°C for twelve months from the date of receipt.

Note

For research use only.

Data Image

**Western Blot**

Recombinant Protein lysates were subjected to SDS PAGE followed by western blot with CD158b2/KIR2DL3 antibody (PHE43601) at 1 µg/ml.

Lane 1: Recombinant protein

Second Ab: Goat Anti-Rabbit IgG H&L Polyclonal antibody, HRP (PTB96431) at 0.1 µg/mL.

Predict MW: 62 kDa

Observed MW: 62 kDa