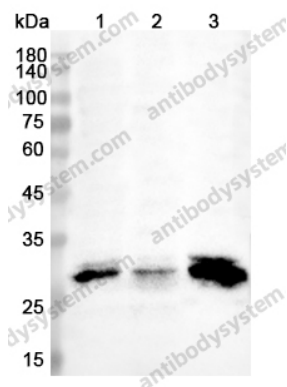


Anti-ANP32A Polyclonal Antibody

Summary

Catalog No.	PHE24301
Host species	Rabbit
Tested applications	ELISA: 1:4000-1:8000, IHC: 1:50-1:100, WB: 1:1000-1:4000
Species reactivity	Human, Mouse, Rat
Immunogen	E. coli - derived recombinant Human ANP32A (Glu2-Asp175).
Form	Liquid
Storage buffer	0.01M PBS, pH 7.4, 50% Glycerol, 0.05% Proclin 300.
Clonality	Polyclonal
Isotype	IgG
Applications	ELISA, IHC, WB
Target	pp32, Putative HLA-DR-associated protein I, MAPM, ANP32A, C15orf1, Acidic leucine-rich nuclear phosphoprotein 32 family member A, Mapmodulin, LANP, Potent heat-stable protein phosphatase 2A inhibitor I1PP2A, PHAPI, Leucine-rich acidic nuclear protein, Acidic nuclear phosphoprotein pp32, PHAP1
Purification	Purified by antigen affinity column.
Accession	P39687
Stability and Storage	Use a manual defrost freezer and avoid repeated freeze thaw cycles. Store at 2 to 8°C for frequent use. Store at -20 to -80°C for twelve months from the date of receipt.
Note	For research use only.

Data Image



Western blot

Various lysates were subjected to SDS PAGE followed by western blot with ANP32A antibody (PHE24301) at 0.83 μ g/ml.

Lane 1: A549 cell lysate

Lane 2: HeLa cell lysate

Lane 3: Raji cell lysate

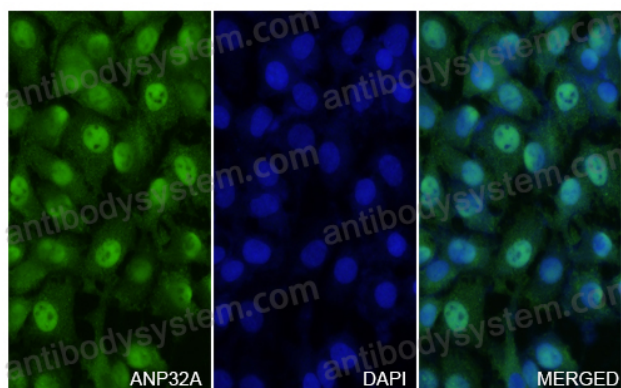
Second Ab: Goat Anti-Rabbit IgG H&L Polyclonal antibody, HRP (PTB96431) at 0.1 μ g/mL.

Predict MW: 28 kDa

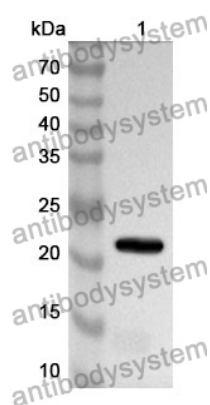
Observed MW: 28 kDa

ANP32A in A549 Cell Line.

The A549 cells were fixed with 4% paraformaldehyde (20 min), and then blocked with 5% goat serum for 1h. And the cells were incubated for 2h at 37°C with ANP32A (PHE24301) at 16.6 μ g/ml. The section was then incubated with Goat Anti-Rabbit IgG (Alexa Fluor-488) preabsorbed at 1/100 dilution (Shown in green) for 1 hour at room temperature. Nuclear DNA was labelled with DAPI (shown in blue).



Immunocytochemistry/ Immunofluorescence



Western Blot

Recombinant Protein lysates were subjected to SDS PAGE followed by western blot with ANP32A antibody (PHE24301) at 1 μ g/ml.

Lane 1: Recombinant Protein

Second Ab: Goat Anti-Rabbit IgG H&L Polyclonal antibody, HRP (PTB96431) at 0.1 μ g/mL.

Predict MW: 22 kDa

Observed MW: 22 kDa