

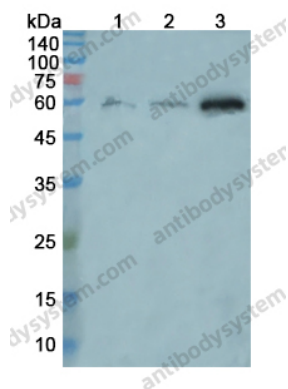
# Anti-CD147/BSG Polyclonal Antibody

## Summary

---

<b>Catalog No.</b>	PHE14001
<b>Host species</b>	Rabbit
<b>Tested applications</b>	ELISA: 1:4000-1:8000, IHC: 1:50-1:100, WB: 1:1000-1:4000
<b>Species reactivity</b>	Human
<b>Immunogen</b>	E. coli - derived recombinant Human CD147/BSG (Gly140-Ala323).
<b>Form</b>	Liquid
<b>Storage buffer</b>	0.01M PBS, pH 7.4, 50% Glycerol, 0.05% Proclin 300.
<b>Clonality</b>	Polyclonal
<b>Isotype</b>	IgG
<b>Applications</b>	ELISA, IHC, WB
<b>Target</b>	Hepatoma-associated antigen,BSG,HAb18G,5F7,TCSF,OK blood group antigen,Collagenase stimulatory factor,CD147,Leukocyte activation antigen M6,Basigin,Extracellular matrix metalloproteinase inducer,EMMPRIN,Tumor cell-derived collagenase stimulatory factor
<b>Purification</b>	Purified by antigen affinity column.
<b>Accession</b>	P35613
<b>Stability and Storage</b>	Use a manual defrost freezer and avoid repeated freeze thaw cycles. Store at 2 to 8°C for frequent use. Store at -20 to -80°C for twelve months from the date of receipt.
<b>Note</b>	For research use only.

## Data Image



Western blot

Various lysates were subjected to SDS PAGE followed by western blot with CD147 / BSG antibody (PHE14001) at 0.48µg/ml.

Lane 1: 293T cell lysate

Lane 2: A2780 cell lysate

Lane 3: U937 cell lysate

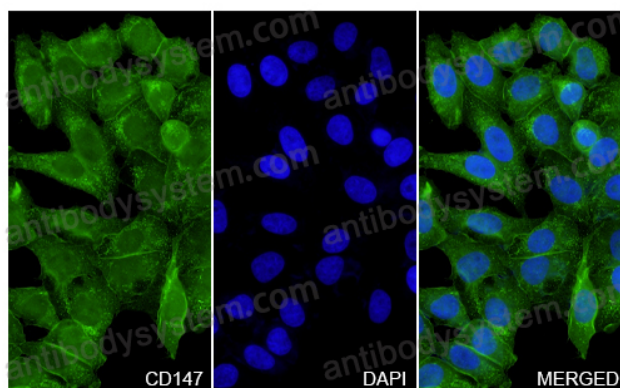
Second Ab: Goat Anti-Rabbit IgG H&L Polyclonal antibody, HRP (PTB96431) at 0.1 µg/mL.

Predict MW: 42 kDa

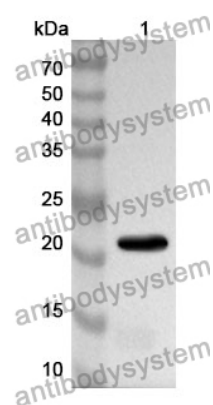
Observed MW: 58 kDa

CD147 / BSG in HepG2 Cell Line.

The HepG2 cells were fixed with 4% paraformaldehyde (20 min), and then blocked with 5% goat serum for 1h. And the cells were incubated for 2h at 37°C with CD147 / BSG (PHE14001) at 9.6 µg/ml. The section was then incubated with Goat Anti-Rabbit IgG (Alexa Fluor-488) preabsorbed at 1/100 dilution (Shown in green) for 1 hour at room temperature. Nuclear DNA was labelled with DAPI (shown in blue).



Immunocytochemistry/ Immunofluorescence



Western Blot

Recombinant Protein lysates were subjected to SDS PAGE followed by western blot with CD147/BSG antibody (PHE14001) at 1  $\mu$ g/ml.

Lane 1: Recombinant Protein

Second Ab: Goat Anti-Rabbit IgG H&L Polyclonal antibody, HRP (PTB96431) at 0.1  $\mu$ g/mL.

Predict MW: 22 kDa

Observed MW: 22 kDa