

Anti-TGM2 Polyclonal Antibody

Summary

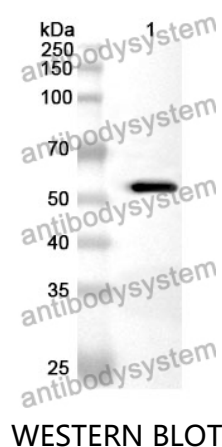
Catalog No.	PHD49201
Host species	Rabbit
Tested applications	ELISA: 1:4000-1:8000, IHC: 1:50-1:200, WB: 1:500-1:4000
Species reactivity	Human, Mouse, Rat
Immunogen	E. coli - derived recombinant Human TGM2 (Met1-Ser538).
Form	Liquid
Storage buffer	0.01M PBS, pH 7.4, 50% Glycerol, 0.05% Proclin 300.
Concentration	0.96 mg/ml
Clonality	Polyclonal
Isotype	IgG
Applications	ELISA, IHC, WB
Target	Protein-glutamine deamidase TGM2,TGase II,Heart G alpha(h),Erythrocyte transglutaminase,Protein-glutamine gamma-glutamyltransferase 2,TG(C),Transglutaminase C,Protein-glutamine serotonyltransferase TGM2,tTG,tGase,Transglutaminase-2,Protein-glutamine noradrenalinytransferase TGM2,TGM2,TG2,TGase C,Protein G alpha(h),Protein-glutamine histaminytransferase TGM2,Tissue transglutaminase,hhG alpha(h),G(h),hTG2,Transglutaminase H,Protein-glutamine dopaminytransferase TGM2,TGC,Isopeptidase TGM2,TGase-2,TGase H,Transglutaminase II
Purification	Purified by antigen affinity column.
Accession	P21980

Stability and Storage

Use a manual defrost freezer and avoid repeated freeze thaw cycles. Store at 2 to 8°C for frequent use. Store at -20 to -80°C for twelve months from the date of receipt.

Note

For research use only.

Data Image

Recombinant Protein lysates were subjected to SDS PAGE followed by western blot with TGM2 antibody (PHD49201) at 1 µg/ml.

Lane 1: Recombinant protein

Second Ab: Goat Anti-Rabbit IgG H&L Polyclonal antibody, HRP (PTB96431) at 0.1 µg/mL.

Predict MW: 63 kDa

Observed MW: 63 kDa