

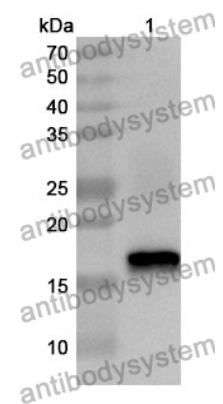
# Anti-PTN Polyclonal Antibody

## Summary

---

<b>Catalog No.</b>	PHD44701
<b>Host species</b>	Rabbit
<b>Tested applications</b>	ELISA: 1:4000-1:8000, IHC: 1:50-1:100, WB: 1:1000-1:4000
<b>Species reactivity</b>	Human, Mouse, Rat
<b>Immunogen</b>	E. coli - derived recombinant Human PTN (Gly33-Asp168).
<b>Form</b>	Liquid
<b>Storage buffer</b>	0.01M PBS, pH 7.4, 50% Glycerol, 0.05% Proclin 300.
<b>Clonality</b>	Polyclonal
<b>Isotype</b>	IgG
<b>Applications</b>	ELISA, IHC, WB
<b>Target</b>	Heparin-binding neurite outgrowth-promoting factor 1, Heparin-binding brain mitogen, PTN, HBGF-8, Pleiotrophin, Heparin-binding growth factor 8, HBBM, HBNF-1, NEGF1, Osteoblast-specific factor 1, HBNF, HBNF1, Heparin-binding growth-associated molecule, HB-GAM, OSF-1, Heparin-binding neurite outgrowth-promoting factor
<b>Purification</b>	Purified by antigen affinity column.
<b>Accession</b>	P21246
<b>Stability and Storage</b>	Use a manual defrost freezer and avoid repeated freeze thaw cycles. Store at 2 to 8°C for frequent use. Store at -20 to -80°C for twelve months from the date of receipt.
<b>Note</b>	For research use only.

## Data Image



WESTERN BLOT

Recombinant Protein lysates were subjected to SDS PAGE followed by western blot with PTN antibody (PHD44701) at 1  $\mu$ g/ml.

Lane 1: Recombinant protein

Second Ab: Goat Anti-Rabbit IgG H&L Polyclonal antibody, HRP (PTB96431) at 0.1  $\mu$ g/mL.

Predict MW: 18 kDa

Observed MW: 18 kDa