

Anti-CD227/MUC1 Polyclonal Antibody

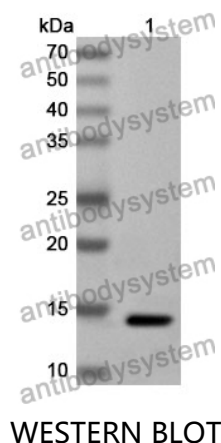
Summary

Catalog No.	PHD14201
Host species	Rabbit
Tested applications	ELISA: 1:4000-1:8000, IHC: 1:50-1:100, WB: 1:1000-1:4000
Species reactivity	Human
Immunogen	E. coli - derived recombinant Human CD227/MUC1 (Ser24-Pro146).
Form	Liquid
Storage buffer	0.01M PBS, pH 7.4, 50% Glycerol, 0.05% Proclin 300.
Clonality	Polyclonal
Isotype	IgG
Applications	ELISA, IHC, WB
Target	PEMT,CA 15-3,H23AG,Peanut-reactive urinary mucin,PEM,EMA,Cancer antigen 15-3,MUC-1,Episialin,MUC1-CT,MUC1-beta,Tumor-associated mucin,CD227,Polymorphic epithelial mucin,KL-6,MUC1-alpha,MUC1,PUM,Krebs von den Lungen-6,MUC1-NT,Tumor-associated epithelial membrane antigen,Mucin-1,Breast carcinoma-associated antigen DF3,Carcinoma-associated mucin
Purification	Purified by antigen affinity column.
Accession	P15941
Stability and Storage	Use a manual defrost freezer and avoid repeated freeze thaw cycles. Store at 2 to 8°C for frequent use. Store at -20 to -80°C for twelve months from the date of receipt.

Note

For research use only.

Data Image



Recombinant Protein lysates were subjected to SDS PAGE followed by western blot with CD227/MUC1 antibody (PHD14201) at 1 µg/ml.

Lane 1: Recombinant protein

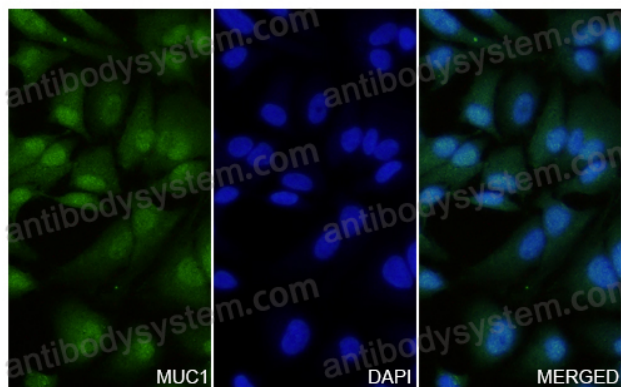
Second Ab: Goat Anti-Rabbit IgG H&L Polyclonal antibody, HRP (PTB96431) at 0.1 µg/mL.

Predict MW: 14 kDa

Observed MW: 14 kDa

MUC1 in Hela Cell Line.

The Hela cells were fixed with 4% paraformaldehyde (20 min), and then blocked with 5% goat serum for 1h. And the cells were incubated for 2h at 37°C with MUC1 (PHD14201) at 15 µg/ml. The section was then incubated with Goat Anti-Rabbit IgG (Alexa Fluor-488) preabsorbed at 1/100 dilution (Shown in green) for 1 hour at room temperature. Nuclear DNA was labelled with DAPI (shown in blue).



Immunocytochemistry/ Immunofluorescence