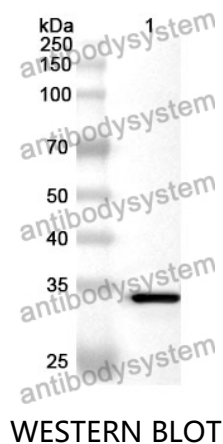


Anti-CCL4/MIP-1-beta Polyclonal Antibody

Summary

Catalog No.	PHC96901
Host species	Rabbit
Tested applications	ELISA: 1:4000-1:8000, IHC: 1:50-1:100, WB: 1:1000-1:4000
Species reactivity	Human
Immunogen	E. coli - derived recombinant Human CCL4/MIP-1-beta (Ala24-Asn92).
Form	Liquid
Storage buffer	0.01M PBS, pH 7.4, 50% Glycerol, 0.05% Proclin 300.
Clonality	Polyclonal
Isotype	IgG
Applications	ELISA, IHC, WB
Target	MIP-1-beta(1-69),MIP-1-beta,C-C motif chemokine 4,Protein H400,ACT-2,HC21,T-cell activation protein 2,Lymphocyte activation gene 1 protein,LAG-1,SIS-gamma,Small-inducible cytokine A4,G-26 T-lymphocyte-secreted protein,Macrophage inflammatory protein 1-beta,LAG1,PAT 744,CCL4,SCYA4,MIP1B
Purification	Purified by antigen affinity column.
Accession	P13236
Stability and Storage	Use a manual defrost freezer and avoid repeated freeze thaw cycles. Store at 2 to 8°C for frequent use. Store at -20 to -80°C for twelve months from the date of receipt.
Note	For research use only.

Data Image



Recombinant Protein lysates were subjected to SDS PAGE followed by western blot with CCL4/MIP-1-beta antibody (PHC96901) at 1 μ g/ml.

Lane 1: Recombinant protein

Second Ab: Goat Anti-Rabbit IgG H&L Polyclonal antibody, HRP (PTB96431) at 0.1 μ g/mL.

Predict MW: 35 kDa

Observed MW: 35 kDa